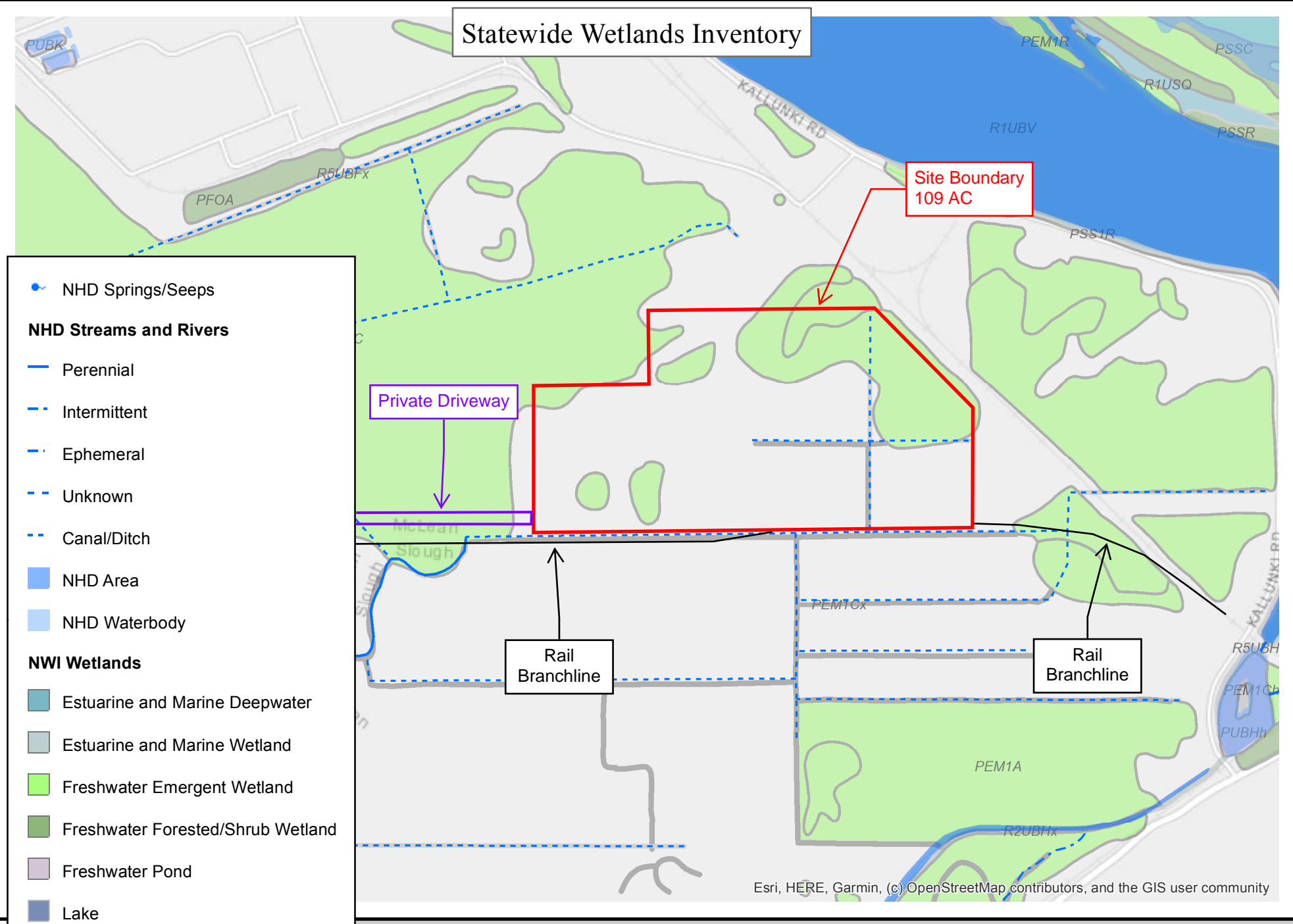
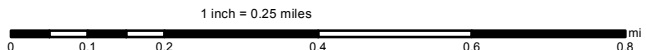


# Statewide Wetlands Inventory



- NHD Springs/Seeps
- NHD Streams and Rivers**
- Perennial
- Intermittent
- Ephemeral
- Unknown
- Canal/Ditch
- NHD Area
- NHD Waterbody
- NWI Wetlands**
- Estuarine and Marine Deepwater
- Estuarine and Marine Wetland
- Freshwater Emergent Wetland
- Freshwater Forested/Shrub Wetland
- Freshwater Pond
- Lake
- Riverine

Esri, HERE, Garmin, (c) OpenStreetMap contributors, and the GIS user community



The Statewide Wetlands Inventory (SWI) represents the best data available at the time this map was published and is updated as new data becomes available. In all cases, actual field conditions determine the presence, absence and boundaries of wetlands and waters (such as creeks and ponds). An onsite investigation by a wetland professional can verify actual field conditions.