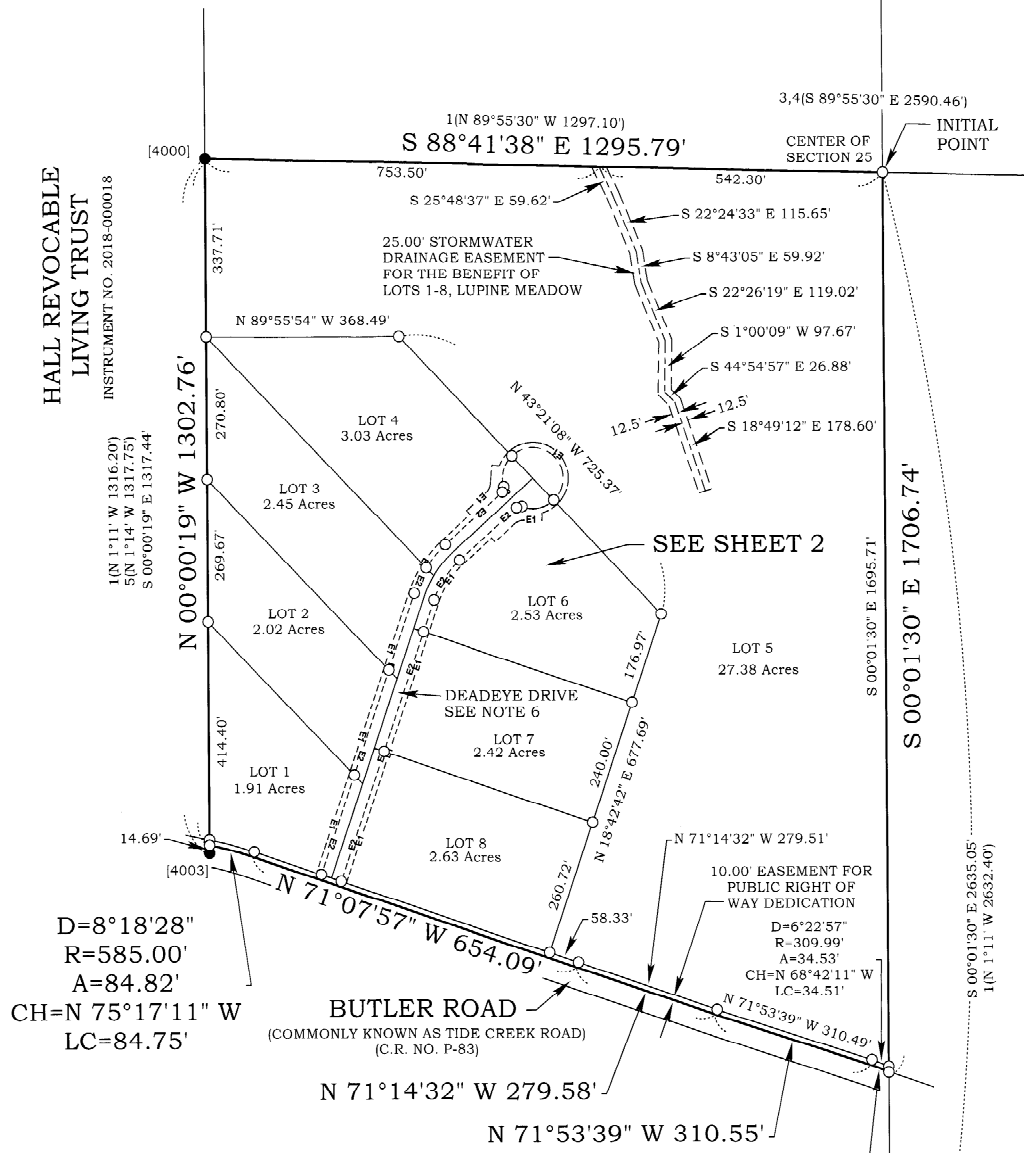


- Y.P.C. MARKED "KLS SURVEYING INC."
- [X] MONUMENT POINT NO
- () RECORD SURVEY DATA
- CS NO. SURVEY NUMBER, COLUMBIA COUNTY SURVEY RECORDS
- Y.P.C. YELLOW PLASTIC CAP
- E1----- EASEMENTS SEE NOTE 7
- E2----- DEADEYE DRIVE EASEMENTS SEE NOTE 6.

PERLOT
 INSTRUMENT NO. 2012-009665

HALL REVOCABLE
 LIVING TRUST
 INSTRUMENT NO. 2018-000018



PETERSEN
 INSTRUMENT NO. 2021-002767

NOTES:

1. THIS PLAT IS SUBJECT TO THE TERMS & CONDITIONS OF COLUMBIA COUNTY LAND DEVELOPMENT SERVICES CASEFILE NO. S 23-01 & COLUMBIA COUNTY BOARD OF COMMISSIONERS FINAL ORDER 2-2024.
2. THIS PLAT IS SUBJECT TO THE TERMS AND CONDITIONS OF THE WAIVER OF REMONSTRANCE RECORDED ON THE 25TH DAY OF JANUARY 2025, AS INSTRUMENT NO. 2025-000400, COLUMBIA COUNTY RECORDS.
3. THIS PLAT IS SUBJECT TO THE TERMS AND CONDITIONS OF THE ROAD MAINTENANCE AGREEMENT FOR ACCESS AND UTILITY EASEMENT AREA (INCLUDING DEADEYE DRIVE) RECORDED AS INSTRUMENT NO. 2025-4694, COLUMBIA COUNTY RECORDS.
4. THIS PLAT IS SUBJECT TO THE TERMS AND CONDITIONS OF THE MAINTENANCE AGREEMENT FOR STORMWATER FACILITIES AND EASEMENT FOR EMERGENCY MAINTENANCE OF STORMWATER FACILITIES AND DRAINAGE AREA RECORDED AS INSTRUMENT NO. 2025-4695, COLUMBIA COUNTY RECORDS.
5. THIS PLAT IS SUBJECT TO A 5.00' UTILITY EASEMENT ALONG THE BOUNDARIES OF LOTS 1-8.
6. DEADEYE DRIVE EASEMENTS:
 VARIABLE WIDTH (PRIVATE) EASEMENT FOR ACCESS FOR THE BENEFIT OF LOTS 2-7
 VARIABLE WIDTH (PUBLIC & PRIVATE) UTILITY EASEMENT FOR THE BENEFIT OF LOTS 1-8
 VARIABLE WIDTH (PRIVATE) STORM DRAINAGE EASEMENT FOR THE BENEFIT OF LOTS 1-8
 VARIABLE WIDTH (PUBLIC & PRIVATE) EMERGENCY STORMWATER FACILITIES MAINTENANCE EASEMENT FOR THE BENEFIT OF LOTS 1-8.
7. EASEMENTS BETWEEN DEADEYE DRIVE EASEMENTS AND E1
 VARIABLE WIDTH (PUBLIC & PRIVATE) UTILITY EASEMENT FOR THE BENEFIT OF LOTS 1-8
 VARIABLE WIDTH (PRIVATE) STORM DRAINAGE EASEMENT FOR THE BENEFIT OF LOTS 1-8
 VARIABLE WIDTH (PUBLIC & PRIVATE) EMERGENCY STORMWATER FACILITIES MAINTENANCE EASEMENT FOR THE BENEFIT OF LOTS 1-8.

D=8°18'28"
 R=585.00'
 A=84.82'
 CH=N 75°17'11" W
 LC=84.75'

BUTLER ROAD
 (COMMONLY KNOWN AS TIDE CREEK ROAD)
 (C.R. NO. P-83)

D=7°15'23"
 R=299.00'