



2KG Contractors
4917 NE 185th Drive
Portland, Oregon 97230
Phone: +15034892020

Project: 2507 - Columbia County Deflection
230 Strand Street
St. Helens, Oregon 97051

Prime Contract Potential Change Order #PCO 08: PR 02 - Access Control Changes

Table with 4 columns: Field Name, Value, Field Name, Value. Includes fields like TO: Columbia County, FROM: 2KG Contractors, Inc, PCO NUMBER/REVISION: PCO 08 / 0, CONTRACT: 2507 - 1020 - 2507 Prime Contract, etc.

POTENTIAL CHANGE ORDER TITLE: PR 02 - Access Control Changes

CHANGE REASON: Changed Scope

POTENTIAL CHANGE ORDER DESCRIPTION: (The Contract Is Changed As Follows)
This PCO reflects the changes to the access control scope shown in PR 02.

ATTACHMENTS:

Table with 5 columns: #, Budget Code, Description, Tax Code, Amount (ex. tax). Contains line items for Door Supplier Subcontracts, General Conditions.Labor, and Door Installer Subcontracts, plus Subtotal and Grand Total.

Brendan Hart (Hart Architects)
2130 N Kilpatrick St - PO Box 17250
Portland, Oregon 97217

Columbia County
230 Strand Street
Saint Helens, Oregon 97051

2KG Contractors, Inc
4917 NE 185th Drive
Portland, Oregon 97230

SIGNATURE DATE SIGNATURE DATE SIGNATURE DATE



Gibson Door & Millwork, Inc.

10148 SE Clatsop St.
Portland, OR 98266
(503) 788-8080 fax (503) 788-9090

COR: #02

RFI: #

Desc: PR02

Change Order Request

Contractor

Name 2KG CONTRACTORS, INC
Address 4917 N.E. 185TH DRIVE
City PORTLAND, OREGON 97230
Phone (503) 489-2020

Job

Name Columbia County Delflection Suite
Address 230 STRAND STREET
ST. HELENS, OREGON 97051
GC Job # _____ Gibson Job **26-011**

Qty	Units	Description	Unit Price	TOTAL
		CREDIT:		
-1.6	hrs	162B (HW 04) - Exit Device, Electric Strike, Closer	\$110.00	(\$176.88)
-0.5	hrs	153 - HW 06 - Lockset, Closer	\$110.00	(\$58.96)
		ADD:		
0.6	hrs	162B (HW 04) - Lockset	\$110.00	\$66.00
2.25	hrs	153 HW 06 - Elec. Lockset, EPT	\$110.00	\$247.50
TOTAL				\$77.66

Approval

Date: 1/14/2026

COR: #02

PR02

RFI: #

Project Manager John Pontier

Notes/Remarks



333 NW 16th Avenue
Portland, OR 97209
Phone: (503) 243-6500
Fax: (503) 243-6507

CHANGE ORDER QUOTATION

Date: Jan 9, 2026

Reference: PR #02

Project: Columbia County Delfection Suite

Chown Job No.: C08165CH

To: 2KG Contractors

Attention: Robby Elliot

Material Description:

Amount:

OPENING 153: ADD electric hinge, electric lock, permanent core, wire harness, DELETE hinge, passage set

\$629.00

OPENING 162B: ADD hinge, passage set, wall stop, DELETE electric hinge, electric exit device, mortise cylinder, permanent core, closer, wire harness

\$(3,068.00)

Quoted by: Christian Herb (503) 243-6599

Total:

-\$2,439.00

YOUR WRITTEN AUTHORIZATION IS REQUIRED BEFORE THIS CHANGE ORDER CAN BE PROCESSED. PLEASE RETURN AS SOON AS POSSIBLE SO AS TO NOT DELAY THE ORDERING OF MATERIALS.

Authorized Signature

Date

All other conditions and terms of the original order continue to be in effect. The prices reflected in this change order may not reconcile with line item prices of the original order due to quantity discounts, raw material, labor/freight charges & processing expenses.



Owner:

Columbia County
Attn: Riley Baker & Larry Evenson
230 Strand Street
St. Helens, OR 97051

General Contractor:

2KG Contractors
Attn: Robert Elliot
4917 NE 185th Drive
Portland, OR 97230

Project: Columbia County Deflection Suite
Project No: 2408

PROPOSAL REQUEST 02

Issuance Date: January 1, 2026

The Owner requests an itemized proposal for changes to the Contract Sum and Contract Time for the Construction Document modifications described in this issuance. The Contractor shall notify the Owner and Architect in writing of the anticipated proposal submission date within a reasonable timeframe.

Updated documents have been clouded with Revision tag "4" and noted with a "ASI 01" issuance title.

Summary of Changes:

Construction Document	Description of Change
A1.00	Revision to signage
A1.10	Revision to door access control configuration
A8.02	Revision to door hardware sets

Attachments:

CC Deflection Suite_PR02_26.01.08



Signature

BRENDAN HART

Name

JANUARY 8, 2026

Date

FLOOR PLAN GENERAL NOTES

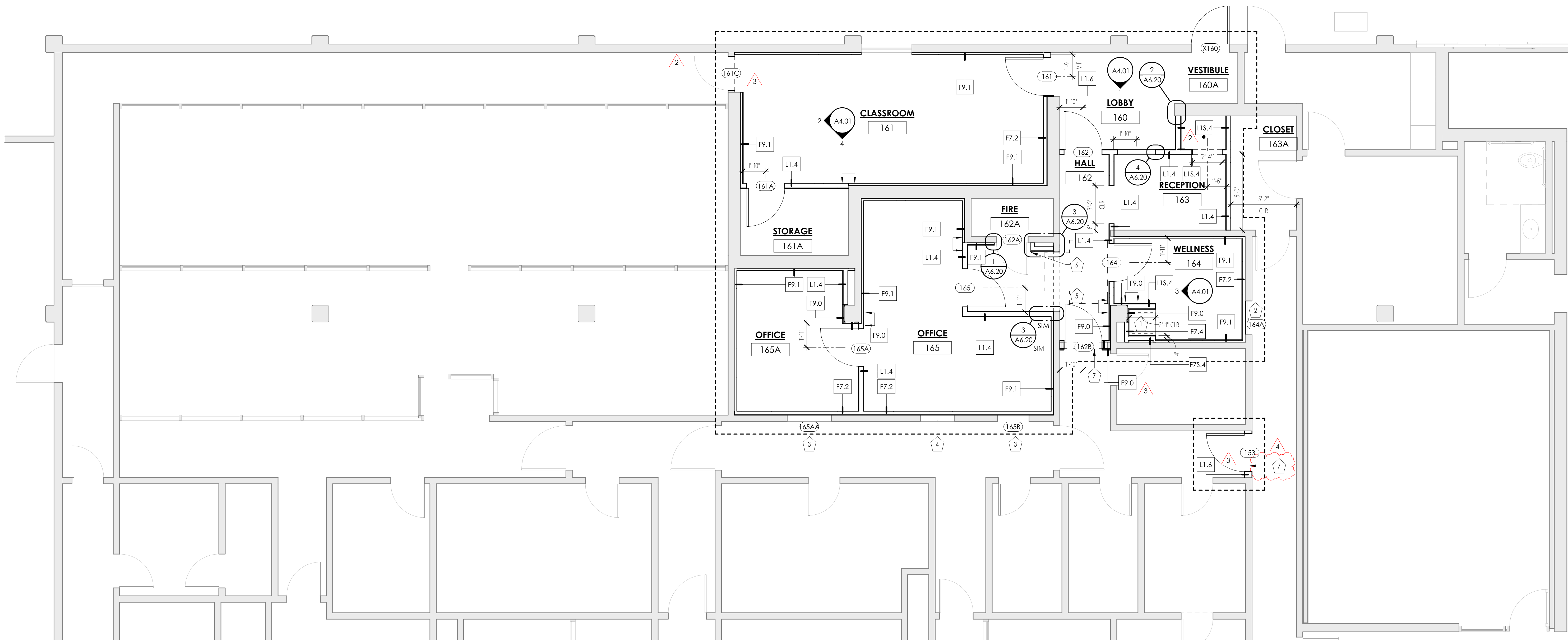
- REFER TO SHEET FOR KEYNOTES. KEYNOTES MAY NOT BE TAGGED ON EVERY SHEET.
- NEW WORK: DIMENSIONS TO F.O. STUD AND GRID LINES U.N.O. EXST. WORK: DIMENSIONS ARE TO FACE FINISH FACE, U.N.O.
- SEE **A4 SERIES** ENLARGED PLANS FOR ADDITIONAL INFORMATION WHERE CALLOUTS ARE NOTED, INCLUDING CASEWORK/CABINETRY DIMENSIONS
- MECHANICAL, ELECTRICAL, FIRE ALARM, AND FIRE SPRINKLER SYSTEMS ARE A DELEGATED DESIGN UNDER A SEPARATE PERMIT. SOME ITEMS CRITICAL FOR COORDINATION OR SUCCESSFUL EXECUTION OF DESIGN INTENT ARE SHOWN ON THESE DRAWINGS, BUT ARE NOT EXCLUSIVE AND SHOULD BE VERIFIED WITH SCOPE REQUIREMENTS IN THE RELEVANT PERMITTED DRAWINGS
- LOW-VOLTAGE SYSTEMS INCLUDING SECURITY, ACCESS CONTROL, AUDIO/VISUAL, AND NETWORK/DATA ARE TO BE OWNER FURNISHED AND INSTALLED; COORDINATE WITH OWNER FOR COORDINATION AS REQUIRED TO SUPPORT EFFICIENT SEQUENCING OF WORK.
- PROVIDE BLOCKING IN WALL AND CEILING FRAMING AS REQ'D FOR ALL CASEWORK, ACCESSORIES, EQUIPMENT, OR OTHER WALL/CEILING-MOUNTED SCOPE. COORDINATE WITH OWNER ON ANY BLOCKING REQUIRED FOR AV, SECURITY, OR OTHER OFOI SYSTEMS PRIOR TO WALL COVER.
- UNLESS NOTED OTHERWISE, ALL NON LOAD-BEARING INTERIOR PARTITIONS ARE TO BE LIGHT GAUGE 3-5/8" FRAMING WITH STUDS @ 16" O.C.
- UNLESS NOTED OTHERWISE, ALL INTERIOR WALLS ARE TO BE FINISHED WITH (1) LAYER OF 5/8" GWB ON EACH FACE; REFER TO A4 & A7 SERIES DRAWINGS FOR WALL FINISHES

FLOOR PLAN LEGEND

- OBJECT ABOVE
- ===== (E) WALLS TO REMAIN
- ===== NEW WALLS
- (E) COLUMNS TO REMAIN
- NEW COLUMNS
- ◯◯◯ DOOR TAG - SEE **A8 SERIES** FOR SCHEDULE
- D.S. DOWNSPOUT
- ┌ ALIGN

FLOOR PLAN KEYNOTES

- OFOI REFRIGERATOR
- DOOR TO BE LOCKED SHUT; REMOVE (E) KNOB HARDWARE AND FIT WITH KEYED DEADBOLT, COORDINATE LOCKING WITH OWNER
- (E) DOOR TO BE LOCKED SHUT
- (E) CABINET TO BE LOCKED SHUT; REMOVE BRACKETS FROM INTERIOR OF DOOR FACE AND EQUIP WITH HASP & PADLOCK; COORDINATE KEYING WITH OWNER
- VERIFY NEW CONSTRUCTION TO ENSURE CLEAR TURNING SPACE FOR EXISTING BUILDINGS PER 2017 ICC A117.1, FIGURE 304.2.1.1
- ALIGN WALL FINISH WITH (E) DOOR FRAME, REF DETAIL
- PROVIDE ACRYLIC SIGN (APPROX 12"X18") ON DOOR FACE NOTING THAT DOOR PROVIDES ACCESS TO AREAS THAT REQUIRE CJS CLEARANCE, OR SIMILAR; CONFIRM EXACT WORDING WITH OWNER AND ARCHITECT PRIOR TO FABRICATION



1 PROPOSED PARTIAL LEVEL 00 PLAN
1/4" = 1'-0"



REVISION	DATE
2	PR 01 12/22/25
3	ASI 01 12/29/25
4	PR 02 1/8/26

CC DEFLECTION SUITE

230 Strand Street
St. Helens, OR 97051

FLOOR PLAN - LEVEL 00




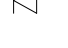





PROJECT NO: 2408
ISSUANCE: PERMIT / BID SET
DATE: 08.22.25

A1.00

POWER PLAN GENERAL NOTES

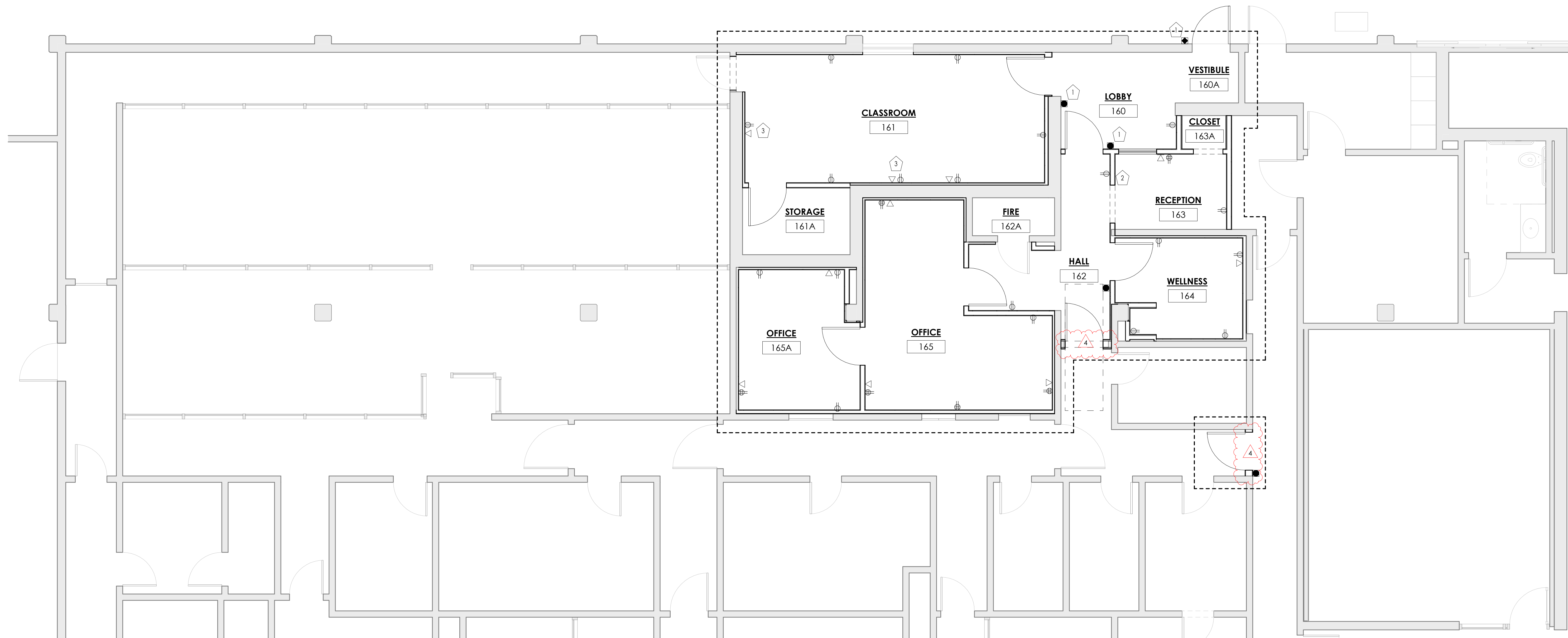
- REFER TO SHEET FOR KEYNOTES. KEYNOTES MAY NOT BE TAGGED ON EVERY SHEET.
- MECHANICAL, ELECTRICAL, FIRE ALARM, AND FIRE SPRINKLER SYSTEMS ARE DELEGATED DESIGNS UNDER SEPARATE PERMITS. SOME ITEMS CRITICAL FOR COORDINATION OR SUCCESSFUL EXECUTION OF DESIGN INTENT ARE SHOWN ON THESE DRAWINGS, BUT ARE NOT EXCLUSIVE AND SHOULD BE VERIFIED WITH SCOPE REQUIREMENTS IN THE RELEVANT PERMITTED DRAWINGS.

POWER PLAN LEGEND

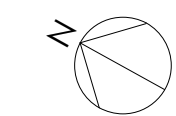
-  FLOOR OUTLET
-  DUPLEX WALL OUTLET
-  QUAD WALL OUTLET
-  CABLE/INTERNET CONNECTION (OFOI)
-  LANDLINE PHONE CONNECTION (OFOI)
-  CONTINUOUS UNDER-CABINET PLUGMOLD
-  LOW VOLTAGE ACCESS CONTROL (OFOI)
-  LOW VOLTAGE ACCESS CONTROL/INTERCOM (OFOI) 

POWER PLAN KEYNOTES

- COORDINATE ACCESS CONTROLS TO BE OPERATED FROM WORKSTATION IN RECEPTION ROOM 163
- ACCESS CONTROLS FOR EXTERIOR AND WAITING ROOM DOORS; COORDINATE INSTALLATION WITH OWNER AND OTHER BUILDING SYSTEMS
- POWER/DATA CONNECTION FOR DISPLAY MONITOR; CONFIRM LOCATION AND INSTALLATION WITH OWNER; COORDINATE WITH ADJACENT BUILDING SYSTEMS AS REQUIRED



1 LEVEL 00 POWER PLAN
SCALE: 1/4" = 1'-0"



REVISION	DATE
1 ADDENDUM 01	10/1/25
4 PR 02	1/8/26

CC DEFLECTION SUITE
230 Strand Street
St. Helens, OR 97051

POWER PLAN - LEVEL 00

PROJECT NO: 2408
ISSUANCE: PERMIT / BID SET
DATE: 08.22.25

A1.10

DOOR SCHEDULE										
NO.	TYPE	DIMENSIONS			DOOR MATERIAL	DOOR FINISH	FRAME MATERIAL	FRAME FINISH	FIRE RATING	HARDWARE GROUP
		FINISHED OPENING WIDTH	FINISHED OPENING HEIGHT	LEAF THICKNESS						
153	INT-B	3'-0"	7'-0"	0'-1 3/4"	WD	PTD-1	KD	PTD-1	-	06
161	INT-B	3'-0"	7'-0"	0'-1 3/4"	WD	STD WD-1	KD	PTD-2	-	01
161A	INT-A	3'-0"	7'-0"	0'-1 3/4"	WD	STD WD-1	KD	PTD-2	-	02
161C	(E)	2'-8"	7'-0"	0'-1 3/4"	(E)	PTD-1	(E)	PTD-1	-	(E)
162	INT-B	3'-0"	7'-0"	0'-1 3/4"	WD	STD WD-1	KD	PTD-2	-	01
162A	(E)	2'-6"	7'-0"	0'-1 3/4"	(E)	PTD-1	(E)	PTD-1	-	07
162B	INT-B	3'-0"	7'-0"	0'-1 3/4"	WD	PTD-1	KD	PTD-1	-	04
164	INT-A	3'-0"	7'-0"	0'-1 3/4"	WD	STD WD-1	KD	PTD-2	-	03
164A	(E)	2'-8"	6'-8"	0'-1 3/8"	(E)	(E)	(E)	(E)	-	08
165	INT-B	3'-0"	7'-0"	0'-1 3/4"	WD	STD WD-1	KD	PTD-2	-	05
165A	INT-A	3'-0"	7'-0"	0'-1 3/4"	WD	STD WD-1	KD	PTD-2	-	05
165AA	(E)	3'-6"	6'-8"	0'-1 3/8"	(E)	(E)	(E)	(E)	-	09
165B	(E)	2'-6"	6'-8"	0'-1 3/4"	(E)	(E)	(E)	(E)	-	09
X160	EXT-A	3'-0"	8'-0"	0'-1 3/4"	HM	PTD-3	HM	PTD-3	-	10

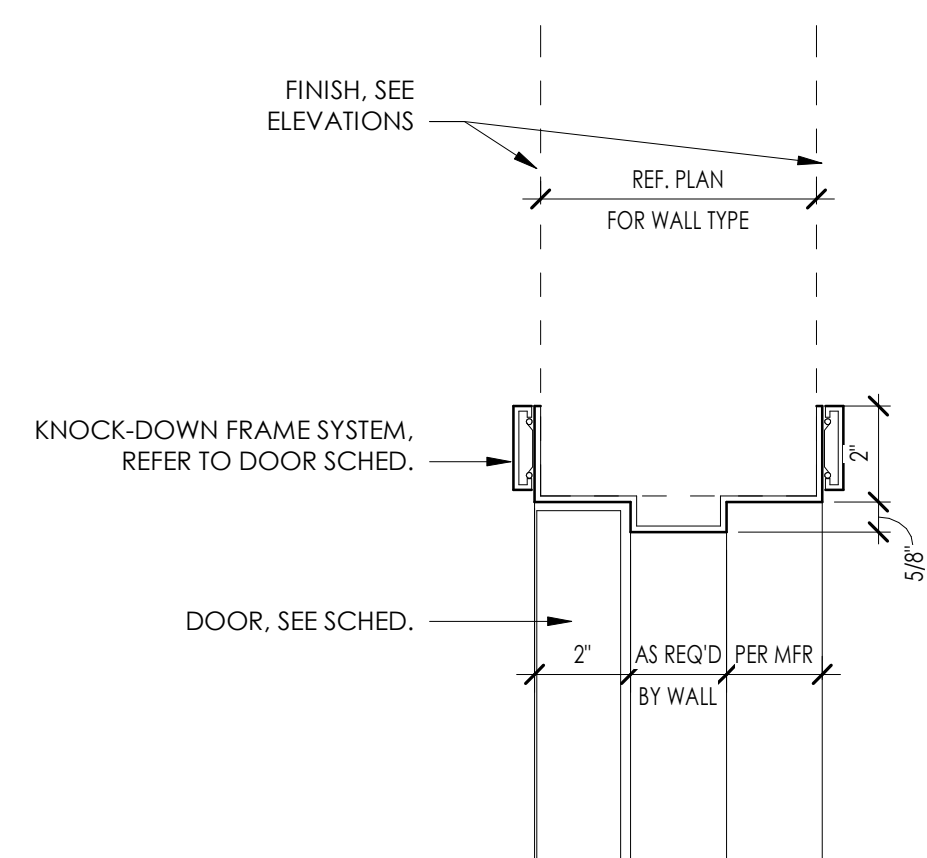
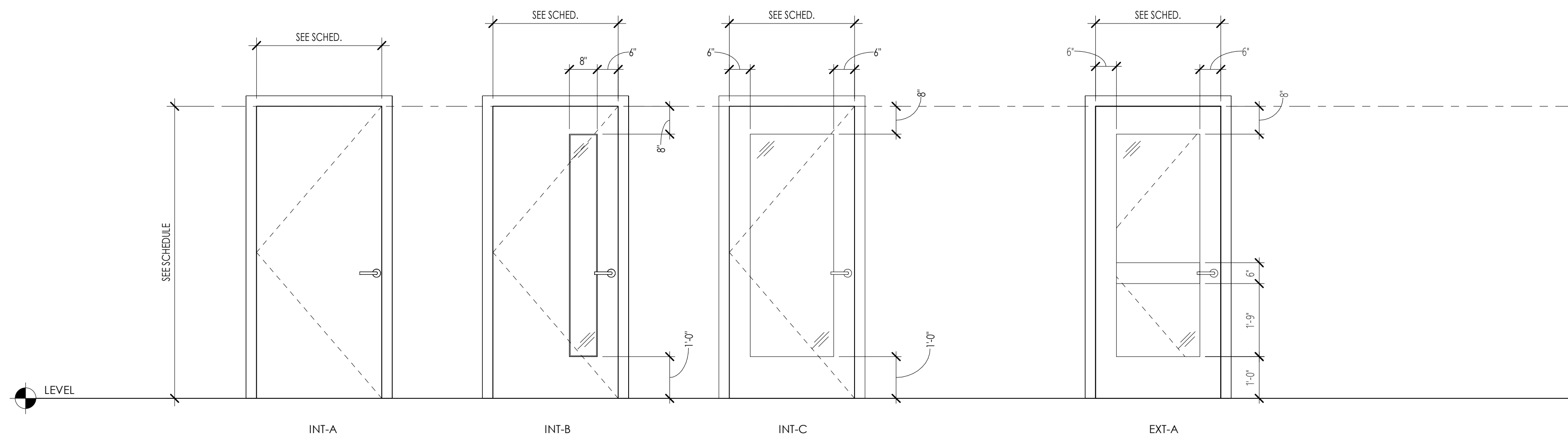
DOOR GENERAL NOTES

- AT NEW DOORS IN EXISTING OPENINGS, UTILIZING EXISTING HEADERS, OR UTILIZING EXISTING WIDTHS, DIMENSIONS PROVIDED ARE APPROXIMATE - CONTRACTOR TO VERIFY ALL EXISTING OPENING DIMENSIONS.
- DIMENSIONS PROVIDED ARE UNIT/FINISHED OPENING DIMENSIONS; VERIFY R.O. REQUIRED WITH MFR.
- FIELD-VERIFY ALL R.O. DIMENSIONS PRIOR TO FABRICATION.
- EXTERIOR DOOR U-VALUES AND SHGC VALUES SHALL MEET THE PRESCRIPTIVE ENERGY VALUES AS NOTED ON G SERIES SHEETS.
- PROVIDE TEMPERED GLAZING (T.G.) AT ALL GLAZING PROVIDED IN FIXED OR OPERABLE PANELS OF DOORS. SEE SECTION R308.4 OF THE 2020 IRC FOR MORE INFORMATION.
- COORDINATE DOOR AND FRAME FINISHES AND HARDWARE WITH OWNER AND DESIGNER, TYP.

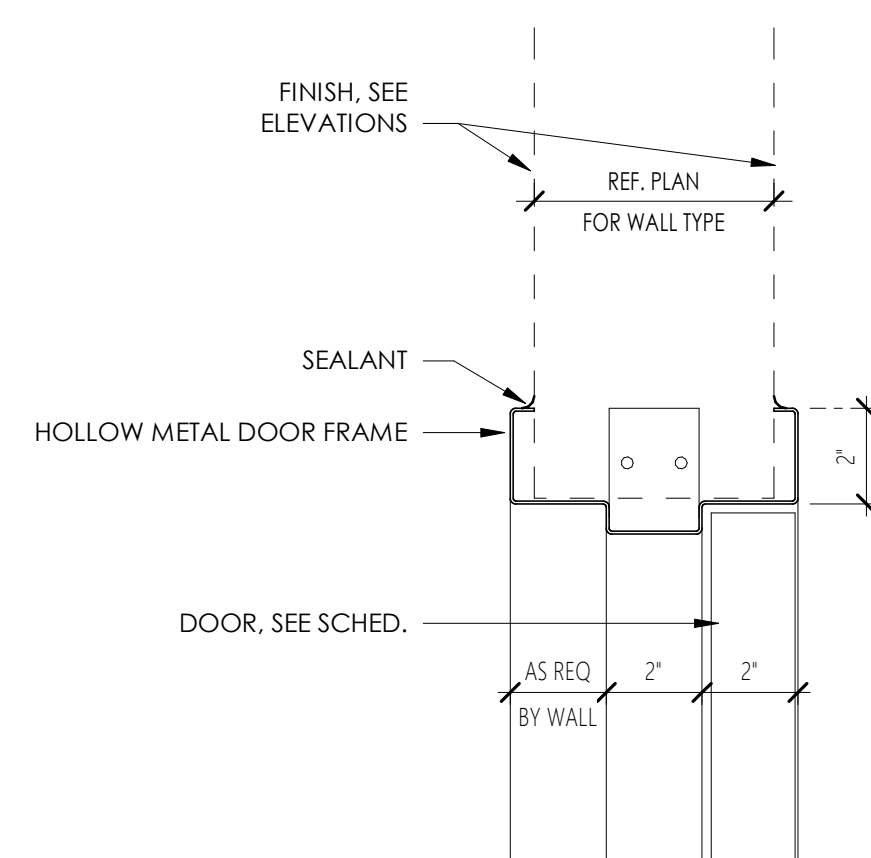
DOOR HARDWARE TYPES

- HARDWARE TYPE 01**
 HINGES: (3) IVES STEEL BUTT HINGES, FULL MORTISE, SATIN CHROME US26D FINISH, 58B1 SERIES (OR APPROVED EQUAL)
 LOCKSETS & LATCHES: BEST 9K SERIES (WITH "W" SERIES REMOTE ELECTROMECHANICAL LOCK, COORDINATE WITH OWNER); 2-3/4" BACKSET, 7-PIN HOUSING, COORDINATE FUNCTION WITH ACCESS CONTROL SYSTEM, 16D LEVER STYLE, SATIN CHROME 626 FINISH (OR APPROVED EQUAL)
 CORE: PROVIDE SMALL FORMAT KEY REMOVABLE INTERCHANGEABLE CORES
 ACCESS CONTROL SYSTEM: COORDINATE SPECIFICATION WITH OWNER
 DOOR STOP: ROCKWOOD 403 CONCAVE SOLID CAST WALL STOP, US26D SATIN CHROME FINISH
- HARDWARE TYPE 02**
 HINGES: (3) IVES STEEL BUTT HINGES, FULL MORTISE, SATIN CHROME US26D FINISH, 58B1 SERIES (OR APPROVED EQUAL)
 LOCKSETS & LATCHES: BEST 9K SERIES, 2-3/4" BACKSET, 7-PIN HOUSING, STOREROOM FUNCTION, 16D LEVER STYLE, SATIN CHROME 626 FINISH (OR APPROVED EQUAL)
 CORE: PROVIDE SMALL FORMAT KEY REMOVABLE INTERCHANGEABLE CORES
 DOOR STOP: ROCKWOOD 403 CONCAVE SOLID CAST WALL STOP, US26D SATIN CHROME FINISH
- HARDWARE TYPE 03**
 HINGES: (3) IVES STEEL BUTT HINGES, FULL MORTISE, SATIN CHROME US26D FINISH, 58B1 SERIES (OR APPROVED EQUAL)
 LOCKSETS & LATCHES: BEST 9K SERIES (WITH "W" SERIES REMOTE ELECTROMECHANICAL LOCK, COORDINATE WITH OWNER); 2-3/4" BACKSET, 7-PIN HOUSING, COORDINATE FUNCTION WITH ACCESS CONTROL SYSTEM, 16D LEVER STYLE, SATIN CHROME 626 FINISH (OR APPROVED EQUAL)
 OCCUPANT INDICATOR: SCHLAGE B560P, SATIN CHROME 626 FINISH (OR APPROVED EQUAL); COORDINATE KEYING WITH LOCKSET
 CORES: PROVIDE SMALL FORMAT KEY REMOVABLE INTERCHANGEABLE CORES
 ACCESS CONTROL SYSTEM: COORDINATE SPECIFICATION WITH OWNER
- HARDWARE TYPE 04**
 HINGES: (3) IVES STEEL BUTT HINGES, FULL MORTISE, SATIN CHROME US26D FINISH, 58B1 SERIES (OR APPROVED EQUAL)
 LOCKSETS & LATCHES: BEST 9K SERIES, 2-3/4" BACKSET, PASSAGE FUNCTION, 16D LEVER STYLE, SATIN CHROME 626 FINISH (OR APPROVED EQUAL)
 DOOR STOP: ROCKWOOD 403 CONCAVE SOLID CAST WALL STOP, US26D SATIN CHROME FINISH
- HARDWARE TYPE 05**
 HINGES: (3) IVES STEEL BUTT HINGES, FULL MORTISE, SATIN CHROME US26D FINISH, 58B1 SERIES (OR APPROVED EQUAL)
 LOCKSETS & LATCHES: BEST 9K SERIES, 2-3/4" BACKSET, 7-PIN HOUSING, ENTRANCE FUNCTION, 16D LEVER STYLE, SATIN CHROME 626 FINISH (OR APPROVED EQUAL)
 CORE: PROVIDE SMALL FORMAT KEY REMOVABLE INTERCHANGEABLE CORES
 DOOR STOP: ROCKWOOD 403 CONCAVE SOLID CAST WALL STOP, US26D SATIN CHROME FINISH
- HARDWARE TYPE 06**
 HINGES: (3) IVES STEEL BUTT HINGES, FULL MORTISE, SATIN CHROME US26D FINISH, 58B1 SERIES (OR APPROVED EQUAL)
 LOCKSETS & LATCHES: BEST 9K SERIES (WITH "W" SERIES REMOTE ELECTROMECHANICAL LOCK, COORDINATE WITH OWNER); 2-3/4" BACKSET, 7-PIN HOUSING, COORDINATE FUNCTION WITH ACCESS CONTROL SYSTEM, 16D LEVER STYLE, SATIN CHROME 626 FINISH (OR APPROVED EQUAL)
 CORE: PROVIDE SMALL FORMAT KEY REMOVABLE INTERCHANGEABLE CORES
 ACCESS CONTROL SYSTEM: COORDINATE SPECIFICATION WITH OWNER
 DOOR STOP: ROCKWOOD 403 CONCAVE SOLID CAST WALL STOP, US26D SATIN CHROME FINISH
- HARDWARE TYPE 07**
 HINGES: EXISTING
 LOCKSETS & LATCHES: BEST 9K SERIES, 2-3/4" BACKSET, 7-PIN HOUSING, STOREROOM FUNCTION, 16D LEVER STYLE, SATIN CHROME 626 FINISH (OR APPROVED EQUAL)
 CORE: PROVIDE SMALL FORMAT KEY REMOVABLE INTERCHANGEABLE CORES
- HARDWARE TYPE 08**
 HINGES: EXISTING
 LOCKSETS & LATCHES: BEST T SERIES DEADBOLT; 7-PIN HOUSING, SATIN CHROME 626 FINISH (OR APPROVED EQUAL); REMOVE EXISTING AND RETURN TO OWNER
 CORE: PROVIDE SMALL FORMAT KEY REMOVABLE INTERCHANGEABLE CORES
 USE WRAP-AROUND BY DON-JO OR SIMILAR IF REQUIRED
- HARDWARE TYPE 09**
 HINGES: EXISTING
 LOCKSETS & LATCHES: EXISTING; REMOVE PULL HANDLE AND RETURN TO OWNER
- HARDWARE TYPE 10**
 HINGES: (3) IVES STEEL BUTT HINGES, FULL MORTISE, SATIN CHROME US26D FINISH, 58B1 SERIES (OR APPROVED EQUAL)
 LOCKSETS & LATCHES: BEST T SERIES REMOTE ELECTROMECHANICAL LOCK, COORDINATE WITH OWNER); 2-3/4" BACKSET, 7-PIN HOUSING, COORDINATE FUNCTION WITH ACCESS CONTROL SYSTEM, 16D LEVER STYLE, SATIN CHROME 626 FINISH (OR APPROVED EQUAL)
 CORE: PROVIDE SMALL FORMAT KEY REMOVABLE INTERCHANGEABLE CORES
 SURFACE CLOSER: LCN 4111 SCUSH WMS, ALUMINUM 689 FINISH (OR APPROVED EQUAL)
 GASKETING: ZERO 1885-BK, BLACK FINISH (OR APPROVED EQUAL)
 ACCESS CONTROL SYSTEM: INTERCOM WITH CAMERA AND DOORBELL; COORDINATE SPECIFICATION WITH OWNER
 THRESHOLD: PEMKO 254 THRESHOLD, "D" DARK BRONZE ANODIZED FINISH (OR APPROVED EQUAL); VERIFY (E) CONDITIONS TO CONFIRM THRESHOLD HEIGHT AND COMPLIANCE WITH ACCESSIBILITY REQUIREMENTS

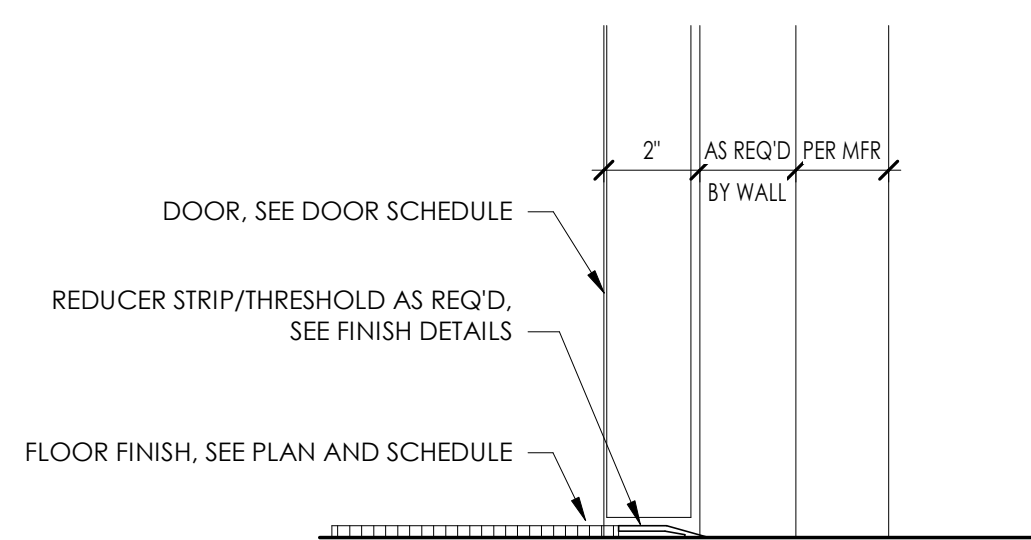
DOOR TYPES



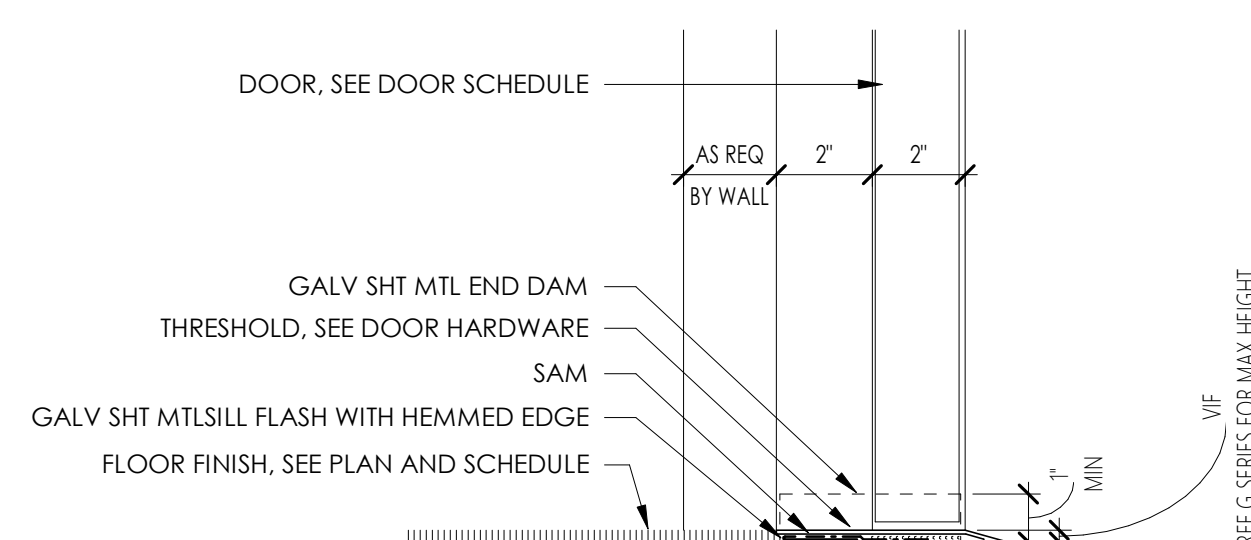
1 KNOCKDOWN FRAME - HEAD/JAMB
3" = 1'-0"



3 HOLLOW METAL FRAME - HEAD/JAMB
3" = 1'-0"



2 DOOR THRESHOLD
3" = 1'-0"



4 DOOR THRESHOLD EXTERIOR
SCALE: 3" = 1'-0"

REVISION	DATE
2	PR 01 12/22/25
3	ASI 01 12/29/25
4	PR 02 1/8/26