



2KG Contractors
4917 NE 185th Drive
Portland, Oregon 97230
Phone: +15034892020

Project: 2507 - Columbia County Deflection
230 Strand Street
St. Helens, Oregon 97051

Prime Contract Potential Change Order #PCO 07: ASI 01 - Door Hardware Scope Clarifications

TO:	Columbia County 230 Strand Street Saint Helens, Oregon 97051	FROM:	2KG Contractors, Inc 4917 NE 185th Drive Portland, Oregon 97230
PCO NUMBER/REVISION:	PCO 07 / 0	CONTRACT:	2507 - 1020 - 2507 Prime Contract
REQUEST RECEIVED FROM:	Robby Elliott (2KG Contractors, Inc)	CREATED BY:	Robby Elliott (2KG Contractors, Inc)
STATUS:	Pending - In Review	CREATED DATE:	1/7/2026
REFERENCE:	ASO 01	PRIME CONTRACT CHANGE ORDER:	None
FIELD CHANGE:	No		
LOCATION:		ACCOUNTING METHOD:	Amount Based
SCHEDULE IMPACT:	0 days	PAID IN FULL:	No
EXECUTED:	No	SIGNED CHANGE ORDER RECEIVED DATE:	
		TOTAL AMOUNT (ex. tax):	\$2,307.00

POTENTIAL CHANGE ORDER TITLE: ASI 01 - Door Hardware Scope Clarifications

CHANGE REASON: Changed Scope

POTENTIAL CHANGE ORDER DESCRIPTION: *(The Contract Is Changed As Follows)*

This PCO addresses the change in the doors/frames/hardware scope based on the issuance of ASI 01.

ATTACHMENTS:

#	Budget Code	Description	Tax Code	Amount (ex. tax)
1	08-71.S Door Supplier Subcontracts	Chown Hardware Costs	no value	\$1,811.00
2	08-14.S Door Installer Subcontracts	Gibson Door Costs	no value	\$151.00
3	01-30.L General Conditions.Labor	2KG Management Time	no value	\$165.00
4	09-90.S Painting.Subcontracts	River City Painting Costs	no value	\$180.00
			Subtotal:	\$2,307.00
			Total Tax:	\$0.00
			Grand Total:	\$2,307.00

Brendan Hart (Hart Architects)
2130 N Kilpatrick St - PO Box 17250
Portland, Oregon 97217

Columbia County
230 Strand Street
Saint Helens, Oregon 97051

2KG Contractors, Inc
4917 NE 185th Drive
Portland, Oregon 97230

SIGNATURE

DATE

SIGNATURE

DATE

SIGNATURE

DATE



Owner:

Columbia County
Attn: Riley Baker & Larry Evenson
230 Strand Street
St. Helens, OR 97051

General Contractor:

2KG Contractors
Attn: Robert Elliot
4917 NE 185th Drive
Portland, OR 97230

Project: Columbia County Deflection Suite
Project No: 2408

ARCHITECT’S SUPPLEMENTAL INSTRUCTIONS 01

Issuance Date: December 29, 2025

Updates to clarify design intent for new door, frame, and hardware scope.

Updated documents have been clouded and noted with a “ASI 01” issuance title.

Summary of Changes:

Construction Document	Description of Change
A1.00	Clarification of existing door to remain (161C); clarification of wall types at doors 162B and 153
A8.02	Inclusion of doors 161C and 162B in door schedule; correction to note door 162A as existing; clarification of door Hardware Type 06

Attachments:

CC Deflection Suite_ASI 01_25.12.29



Signature

BRENDAN HART

Name

12.29.25

Date

FLOOR PLAN GENERAL NOTES

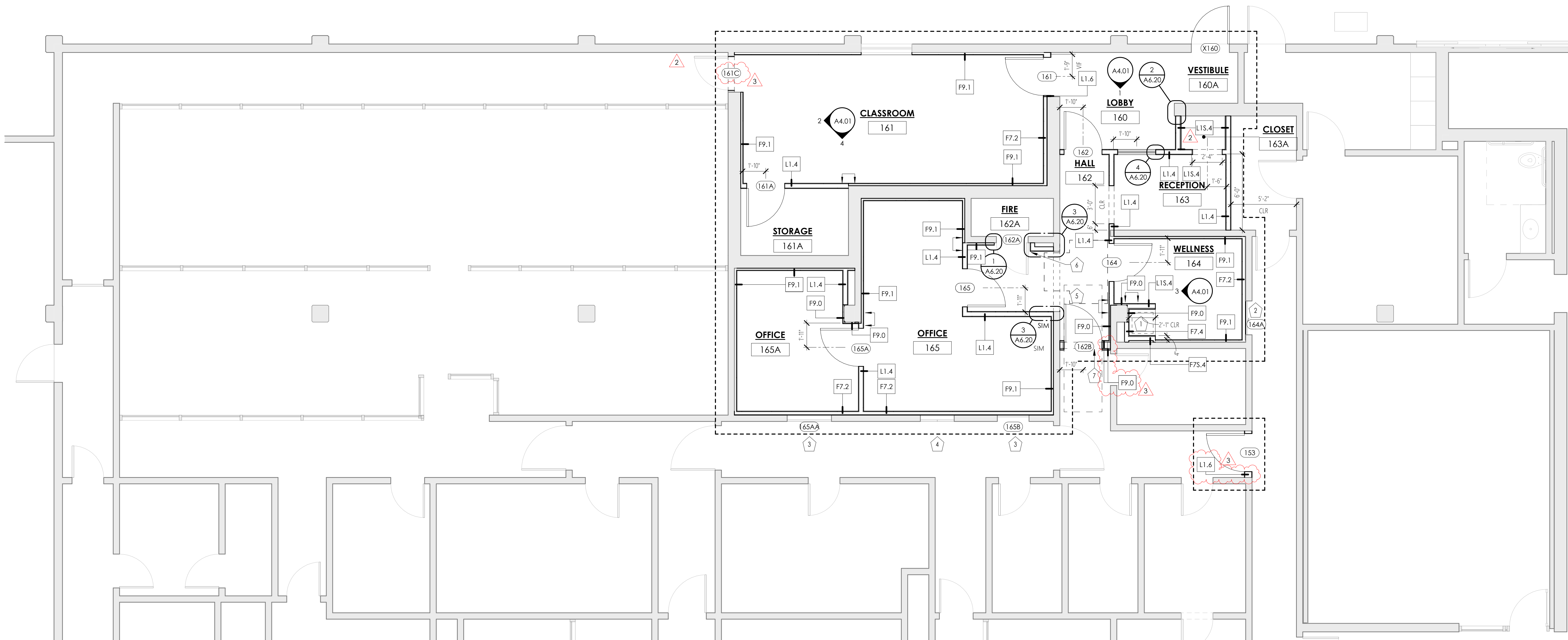
- REFER TO SHEET FOR KEYNOTES. KEYNOTES MAY NOT BE TAGGED ON EVERY SHEET.
- NEW WORK: DIMENSIONS TO F.O. STUD AND GRID LINES U.N.O. EXST. WORK: DIMENSIONS ARE TO FACE FINISH FACE, U.N.O.
- SEE **A4 SERIES** ENLARGED PLANS FOR ADDITIONAL INFORMATION WHERE CALLOUTS ARE NOTED, INCLUDING CASEWORK/CABINETRY DIMENSIONS
- MECHANICAL, ELECTRICAL, FIRE ALARM, AND FIRE SPRINKLER SYSTEMS ARE A DELEGATED DESIGN UNDER A SEPARATE PERMIT. SOME ITEMS CRITICAL FOR COORDINATION OR SUCCESSFUL EXECUTION OF DESIGN INTENT ARE SHOWN ON THESE DRAWINGS, BUT ARE NOT EXCLUSIVE AND SHOULD BE VERIFIED WITH SCOPE REQUIREMENTS IN THE RELEVANT PERMITTED DRAWINGS
- LOW-VOLTAGE SYSTEMS INCLUDING SECURITY, ACCESS CONTROL, AUDIO/VISUAL, AND NETWORK/DATA ARE TO BE OWNER FURNISHED AND INSTALLED; COORDINATE WITH OWNER FOR COORDINATION AS REQUIRED TO SUPPORT EFFICIENT SEQUENCING OF WORK.
- PROVIDE BLOCKING IN WALL AND CEILING FRAMING AS REQ'D FOR ALL CASEWORK, ACCESSORIES, EQUIPMENT, OR OTHER WALL/CEILING-MOUNTED SCOPE. COORDINATE WITH OWNER ON ANY BLOCKING REQUIRED FOR AV, SECURITY, OR OTHER OFOI SYSTEMS PRIOR TO WALL COVER.
- UNLESS NOTED OTHERWISE, ALL NON LOAD-BEARING INTERIOR PARTITIONS ARE TO BE LIGHT GAUGE 3-5/8" FRAMING WITH STUDS @ 16" O.C.
- UNLESS NOTED OTHERWISE, ALL INTERIOR WALLS ARE TO BE FINISHED WITH (1) LAYER OF 5/8" GWB ON EACH FACE; REFER TO A4 & A7 SERIES DRAWINGS FOR WALL FINISHES

FLOOR PLAN LEGEND

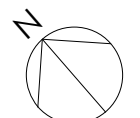
- OBJECT ABOVE
- ===== (E) WALLS TO REMAIN
- ===== NEW WALLS
- (E) COLUMNS TO REMAIN
- NEW COLUMNS
- OOX DOOR TAG - SEE **A8 SERIES** FOR SCHEDULE
- D.S. DOWNSPOUT
- ALIGN

FLOOR PLAN KEYNOTES

- OFOI REFRIGERATOR
- DOOR TO BE LOCKED SHUT; REMOVE (E) KNOB HARDWARE AND FIT WITH KEYPED DEADBOLT, COORDINATE LOCKING WITH OWNER
- (E) DOOR TO BE LOCKED SHUT
- (E) CABINET TO BE LOCKED SHUT; REMOVE BRACKETS FROM INTERIOR OF DOOR FACE AND EQUIP WITH HASP & PADLOCK; COORDINATE KEYING WITH OWNER
- VERIFY NEW CONSTRUCTION TO ENSURE CLEAR TURNING SPACE FOR EXISTING BUILDINGS PER 2017 ICC A117.1, FIGURE 304.2.1.1
- ALIGN WALL FINISH WITH (E) DOOR FRAME, REF DETAIL
- PROVIDE ACRYLIC SIGN (APPROX 12"X18") ON DOOR FACE NOTING THAT DOOR USE WITHOUT KEYCARD IS FOR EMERGENCY ONLY AND WILL TRIGGER AN ALARM; CONFIRM EXACT WORDING WITH OWNER AND ARCHITECT PRIOR TO FABRICATION



1 PROPOSED PARTIAL LEVEL 00 PLAN
1/4" = 1'-0"



REVISION	DATE
2 PR 01	12/22/25
3 ASI 01	12/29/25

CC DEFLECTION SUITE

230 Strand Street
St. Helens, OR 97051

FLOOR PLAN - LEVEL 00

PROJECT NO: 2408
ISSUANCE: PERMIT / BID SET
DATE: 08.22.25

A1.00

DOOR SCHEDULE										
NO.	TYPE	DIMENSIONS			DOOR MATERIAL	DOOR FINISH	FRAME MATERIAL	FRAME FINISH	FIRE RATING	HARDWARE GROUP
		FINISHED OPENING WIDTH	FINISHED OPENING HEIGHT	LEAF THICKNESS						
153	INT-B	3'-0"	7'-0"	0'-1 3/4"	WD	PTD-1	KD	PTD-1	-	06
161	INT-B	3'-0"	7'-0"	0'-1 3/4"	WD	STD WD-1	KD	PTD-2	-	01
161A	INT-A	3'-0"	7'-0"	0'-1 3/4"	WD	STD WD-1	KD	PTD-2	-	02
161C	(E)	2'-8"	7'-0"	0'-1 3/4"	(E)	PTD-1	(E)	PTD-1	-	01
162	INT-B	3'-0"	7'-0"	0'-1 3/4"	WD	STD WD-1	KD	PTD-2	-	01
162A	(E)	2'-6"	7'-0"	0'-1 3/4"	(E)	PTD-1	(E)	PTD-1	-	07
162B	INT-B	3'-0"	7'-0"	0'-1 3/4"	WD	PTD-1	KD	PTD-1	-	04
164	INT-A	3'-0"	7'-0"	0'-1 3/4"	WD	STD WD-1	KD	PTD-2	-	03
164A	(E)	2'-8"	6'-8"	0'-1 3/8"	(E)	(E)	(E)	(E)	-	08
165	INT-B	3'-0"	7'-0"	0'-1 3/4"	WD	STD WD-1	KD	PTD-2	-	05
165A	INT-A	3'-0"	7'-0"	0'-1 3/4"	WD	STD WD-1	KD	PTD-2	-	05
165AA	(E)	3'-0"	6'-8"	0'-1 3/8"	(E)	(E)	(E)	(E)	-	09
165B	(E)	2'-6"	6'-8"	0'-1 3/4"	(E)	(E)	(E)	(E)	-	09
X160	EXT-A	3'-0"	8'-0"	0'-1 3/4"	HM	PTD-3	HM	PTD-3	-	10

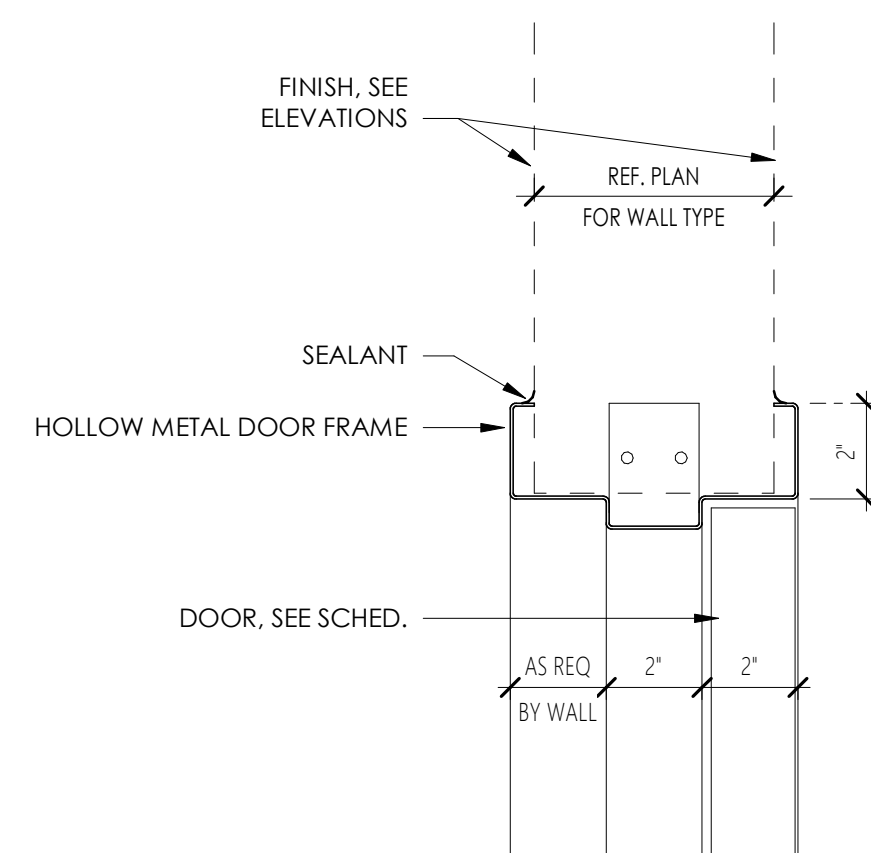
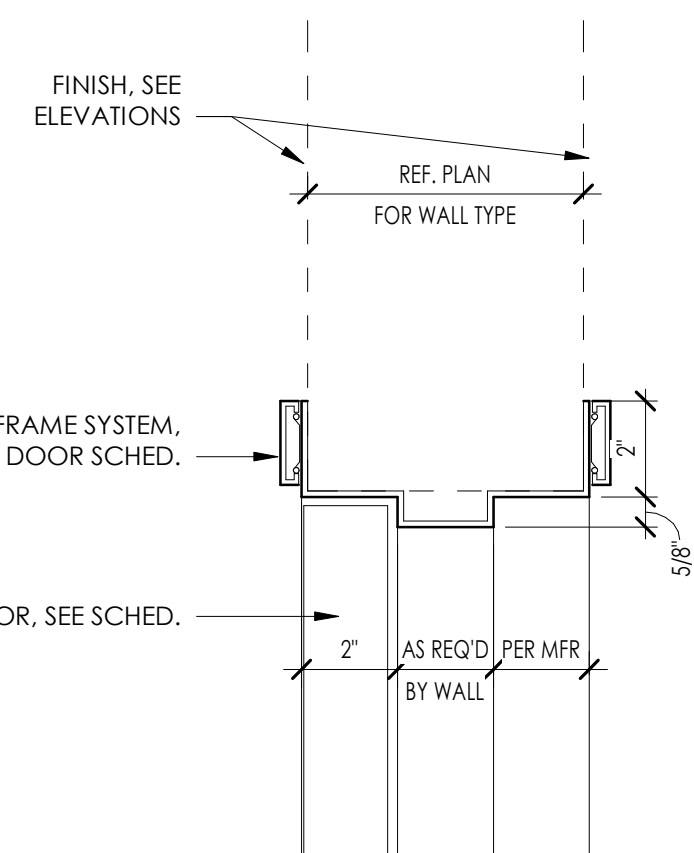
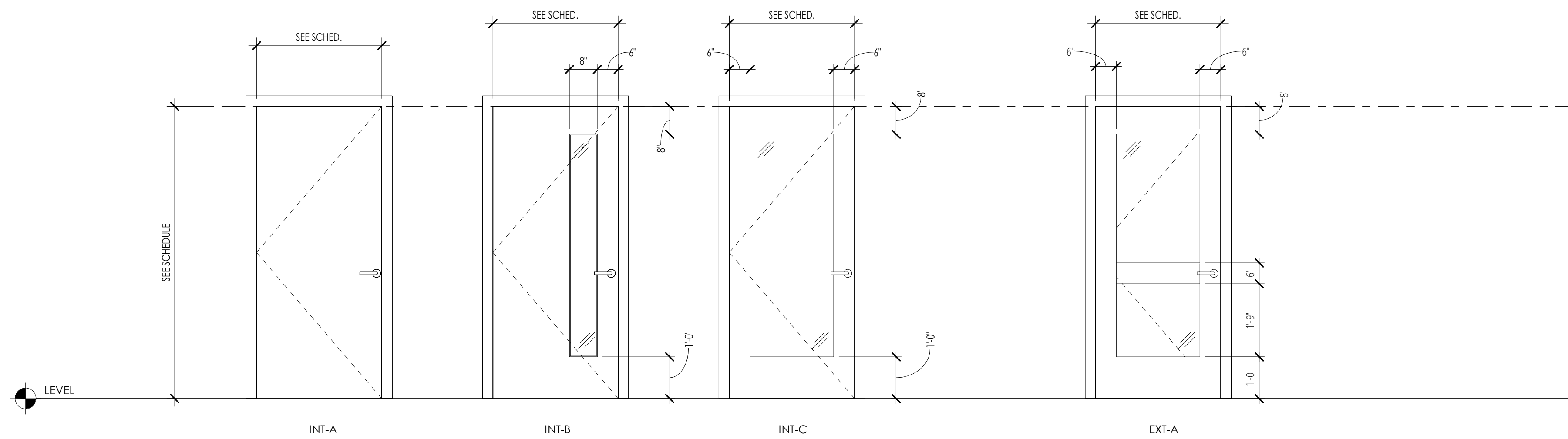
DOOR GENERAL NOTES

- AT NEW DOORS IN EXISTING OPENINGS, UTILIZING EXISTING HEADERS, OR UTILIZING EXISTING WIDTHS, DIMENSIONS PROVIDED ARE APPROXIMATE - CONTRACTOR TO VERIFY ALL EXISTING OPENING DIMENSIONS.
- DIMENSIONS PROVIDED ARE UNIT/FINISHED OPENING DIMENSIONS, VERIFY R.O. REQUIRED WITH MFR.
- FIELD-VERIFY ALL R.O. DIMENSIONS PRIOR TO FABRICATION.
- EXTERIOR DOOR U-VALUES AND SHGC VALUES SHALL MEET THE PRESCRIPTIVE ENERGY VALUES AS NOTED ON G SERIES SHEETS.
- PROVIDE TEMPERED GLAZING (T.G.) AT ALL GLAZING PROVIDED IN FIXED OR OPERABLE PANELS OF DOORS. SEE SECTION R308.4 OF THE 2020 IRC FOR MORE INFORMATION.
- COORDINATE DOOR AND FRAME FINISHES AND HARDWARE WITH OWNER AND DESIGNER, TYP.

DOOR HARDWARE TYPES

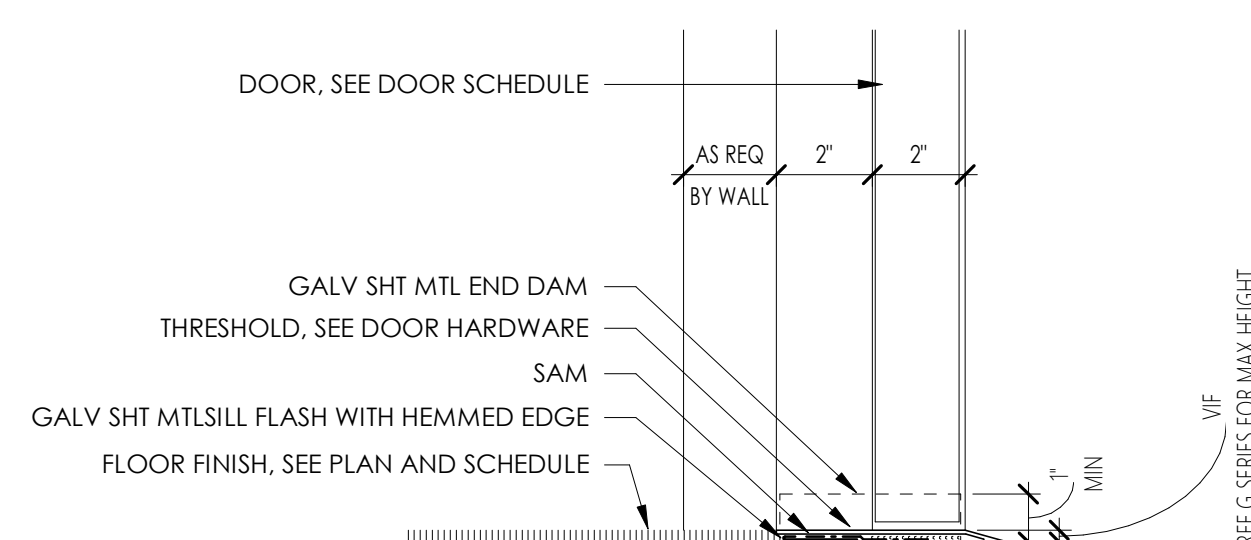
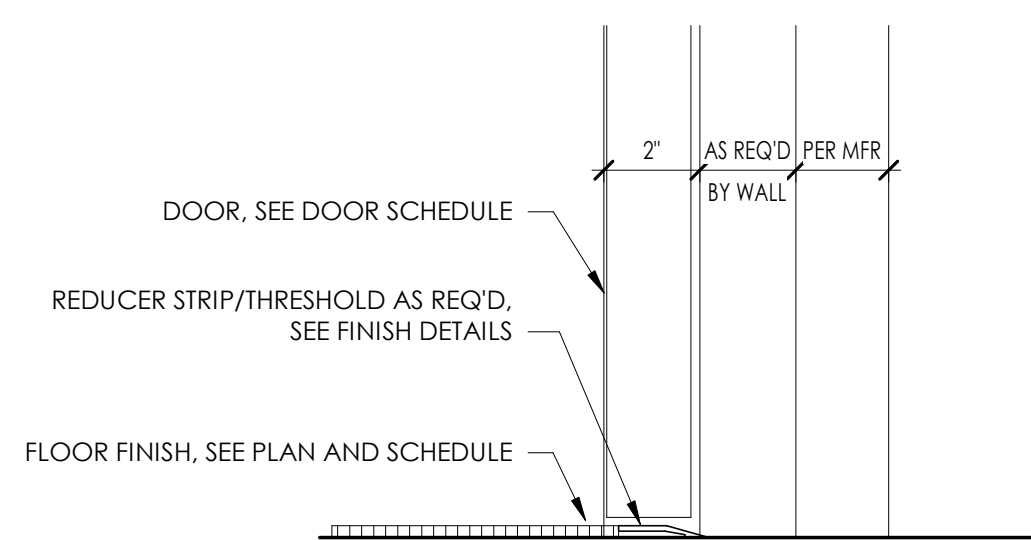
- HARDWARE TYPE 01**
 HINGES: (3) IVES STEEL BUTT HINGES, FULL MORTISE, SATIN CHROME US26D FINISH, 58B1 SERIES (OR APPROVED EQUAL)
 LOCKSETS & LATCHES: BEST 9K SERIES (WITH "W" SERIES REMOTE ELECTROMECHANICAL LOCK, COORDINATE WITH OWNER), 2-3/4" BACKSET, 7-PIN HOUSING, COORDINATE FUNCTION WITH ACCESS CONTROL SYSTEM, 16D LEVER STYLE, SATIN CHROME 626 FINISH (OR APPROVED EQUAL)
 CORE: PROVIDE SMALL FORMAT KEY REMOVABLE INTERCHANGEABLE CORES
 ACCESS CONTROL SYSTEM: COORDINATE SPECIFICATION WITH OWNER
 DOOR STOP: ROCKWOOD 403 CONCAVE SOLID CAST WALL STOP, US26D SATIN CHROME FINISH
- HARDWARE TYPE 02**
 HINGES: (3) IVES STEEL BUTT HINGES, FULL MORTISE, SATIN CHROME US26D FINISH, 58B1 SERIES (OR APPROVED EQUAL)
 LOCKSETS & LATCHES: BEST 9K SERIES (WITH "W" SERIES REMOTE ELECTROMECHANICAL LOCK, COORDINATE WITH OWNER), 2-3/4" BACKSET, 7-PIN HOUSING, COORDINATE FUNCTION WITH ACCESS CONTROL SYSTEM, 16D LEVER STYLE, SATIN CHROME 626 FINISH (OR APPROVED EQUAL)
 CORE: PROVIDE SMALL FORMAT KEY REMOVABLE INTERCHANGEABLE CORES
 DOOR STOP: ROCKWOOD 403 CONCAVE SOLID CAST WALL STOP, US26D SATIN CHROME FINISH
- HARDWARE TYPE 03**
 HINGES: (3) IVES STEEL BUTT HINGES, FULL MORTISE, SATIN CHROME US26D FINISH, 58B1 SERIES (OR APPROVED EQUAL)
 LOCKSETS & LATCHES: BEST 9K SERIES (WITH "W" SERIES REMOTE ELECTROMECHANICAL LOCK, COORDINATE WITH OWNER), 2-3/4" BACKSET, 7-PIN HOUSING, COORDINATE FUNCTION WITH ACCESS CONTROL SYSTEM, 16D LEVER STYLE, SATIN CHROME 626 FINISH (OR APPROVED EQUAL)
 OCCUPANT INDICATOR: SCHLAGE B560P, SATIN CHROME 626 FINISH (OR APPROVED EQUAL); COORDINATE KEYING WITH LOCKSET
 CORES: PROVIDE SMALL FORMAT KEY REMOVABLE INTERCHANGEABLE CORES
 ACCESS CONTROL SYSTEM: COORDINATE SPECIFICATION WITH OWNER
- HARDWARE TYPE 04**
 HINGES: (3) IVES STEEL BUTT HINGES, FULL MORTISE, SATIN CHROME US26D FINISH, 58B1 SERIES (OR APPROVED EQUAL)
 EXIT DEVICE: BEST 2300 WITH 4900B EXIT TRIM LEVER, 2-3/4" BACKSET, SATIN CHROME 626 FINISH, ELR (ELECTRIC LATCH RETRACTION) & ALW (EXIT ALARM), REMOVE POWER FUNCTIONALITY TO BE CONFIRMED WITH OWNER
 ACCESS CONTROL SYSTEM: COORDINATE SPECIFICATION WITH OWNER
 SURFACE CLOSER: LCN 4111 SCUSH WMS, ALUMINUM 689 FINISH (OR APPROVED EQUAL)
- HARDWARE TYPE 05**
 HINGES: (3) IVES STEEL BUTT HINGES, FULL MORTISE, SATIN CHROME US26D FINISH, 58B1 SERIES (OR APPROVED EQUAL)
 LOCKSETS & LATCHES: BEST 9K SERIES (WITH "W" SERIES REMOTE ELECTROMECHANICAL LOCK, COORDINATE WITH OWNER), 2-3/4" BACKSET, 7-PIN HOUSING, ENTRANCE FUNCTION, 16D LEVER STYLE, SATIN CHROME 626 FINISH (OR APPROVED EQUAL)
 CORE: PROVIDE SMALL FORMAT KEY REMOVABLE INTERCHANGEABLE CORES
 DOOR STOP: ROCKWOOD 403 CONCAVE SOLID CAST WALL STOP, US26D SATIN CHROME FINISH
- HARDWARE TYPE 06**
 HINGES: (3) IVES STEEL BUTT HINGES, FULL MORTISE, SATIN CHROME US26D FINISH, 58B1 SERIES (OR APPROVED EQUAL)
 LOCKSETS & LATCHES: BEST 9K SERIES (WITH "W" SERIES REMOTE ELECTROMECHANICAL LOCK, COORDINATE WITH OWNER), 2-3/4" BACKSET, 7-PIN HOUSING, PASSAGE FUNCTION, 16D LEVER STYLE, SATIN CHROME 626 FINISH (OR APPROVED EQUAL)
 SURFACE CLOSER: LCN 4111 SCUSH WMS, ALUMINUM 689 FINISH (OR APPROVED EQUAL)

DOOR TYPES



1 KNOCKDOWN FRAME - HEAD/JAMB
3" = 1'-0"

3 HOLLOW METAL FRAME - HEAD/JAMB
3" = 1'-0"



2 DOOR THRESHOLD
3" = 1'-0"

4 DOOR THRESHOLD EXTERIOR
SCALE: 3" = 1'-0"

REVISION	DATE
2 PR 01	12/22/25
3 ASI 01	12/29/25



333 NW 16th Avenue
Portland, OR 97209
Phone: (503) 243-6500
Fax: (503) 243-6507

CHANGE ORDER QUOTATION

Date: Jan 15, 2026

Reference: ASI #01 REV 1/15/26

Project: Columbia County Deflection Suite

Chown Job No.: C08165CH

To: 2KG Contractors

Attention: Robert Elliot

Material Description:

Amount:

OPENING 153: DELETE electric hinge, exit device, rim cylinder, permanent core, wall stop, wire harness,
ADD passage set, REVISE closer

\$(2,232.00)

OPENING 162B: ADDED opening, 3070 wood door X Timely frame w/ HDW set #04

\$4,043.00

Quoted by: Christian Herb (503) 243-6599

Total:

\$1,811.00

**YOUR WRITTEN AUTHORIZATION IS REQUIRED BEFORE THIS CHANGE ORDER CAN BE PROCESSED. PLEASE RETURN
AS SOON AS POSSIBLE SO AS TO NOT DELAY THE ORDERING OF MATERIALS.**

Authorized Signature

Date

All other conditions and terms of the original order continue to be in effect. The prices reflected in this change order may not reconcile with line item prices of the original order due to quantity discounts, raw material, labor/freight charges & processing expenses.

153	DELETE ELECTRIC HINGE, EXIT DEVICE, MORTISE CYLINDER, PERMANENT CORE, WALL STOP, WIRE HARNESS, ADD PASSAGE SET, REVISE CLOSER			\$ (2,232.00)
	ADD:	\$ 584.00		
	(1) each Ives - 5BB1 4.5 X 4.5 652 Hinge			
	(1) each Best - 9K3-0N16D 626 Passage			
	(1) each LCN - 4111-SCNS 689 Closer			
	DELETE:		\$(2,816.00)	
	(1) each Ives - 5BB1 4.5 X 4.5 TW4 652 Hinge			
	(1) each Best - E2303 X M4908B 630 Exit Device			
	(1) each Best - 1E-74 626 Rim Cylinder			
	(1) each LCN - 4011-REG 689 Closer			
	(1) each Rockwood - 403 626 Wall Stop			
	(1) each Stanley - WH-38P Wire Harness			

162B	ADDED OPENING, 3070 WD X KD W/ HDW SET #04			\$ 4,043.00
	ADD:	\$ 2,821.00		
	(2) each Ives - 5BB1 4.5 X 4.5 652 Hinge			
	(1) each Ives - 5BB1 4.5 X 4.5 TW4 652 Hinge			
	(1) each Best - E2303 X M4908B 630 Exit Device			
	(1) each Best - 1E-74 626 Rim Cylinder			
	(1) each LCN - 4111-SCNS 689 Closer			
	(1) each Stanley - WH-38P Wire Harness			
	ADD:	\$ 1,222.00		
	New 3070 WDD X KD Timely Frame			

				TOTAL
			\$	1,811.00



Gibson Door & Millwork, Inc.

10148 SE Clatsop St.
Portland, OR 98266
(503) 788-8080 fax (503) 788-9090

COR: #01

RFI: #

Desc: ASI 01

Change Order Request

Contractor

Name 2KG CONTRACTORS, INC
Address 4917 N.E. 185TH DRIVE
City PORTLAND, OREGON 97230
Phone (503) 489-2020

Job

Name Columbia County Delflection Suite
Address 230 STRAND STREET
ST. HELENS, OREGON 97051
GC Job # _____ Gibson Job **26-011**

Qty	Units	Description	Unit Price	TOTAL
		CREDIT:		
-3.33	hrs	Remove 163A (HW 02) and 161B (HW 02)	\$110.00	(\$366.00)
-1.0	hrs	153 - HW 06 - Exit Device	\$110.00	(\$110.00)
		ADD:		
5.1	hrs	162B (HW 04)	\$110.00	\$561.00
0	hrs	161C (Existing)	\$110.00	
0.6	hrs	153 HW 06 - Lockset	\$110.00	\$66.00
TOTAL				\$151.00

Approval

Date: 1/6/2026

COR: #01

ASI 01

RFI: #

Project Manager John Pontier

Notes/Remarks

