

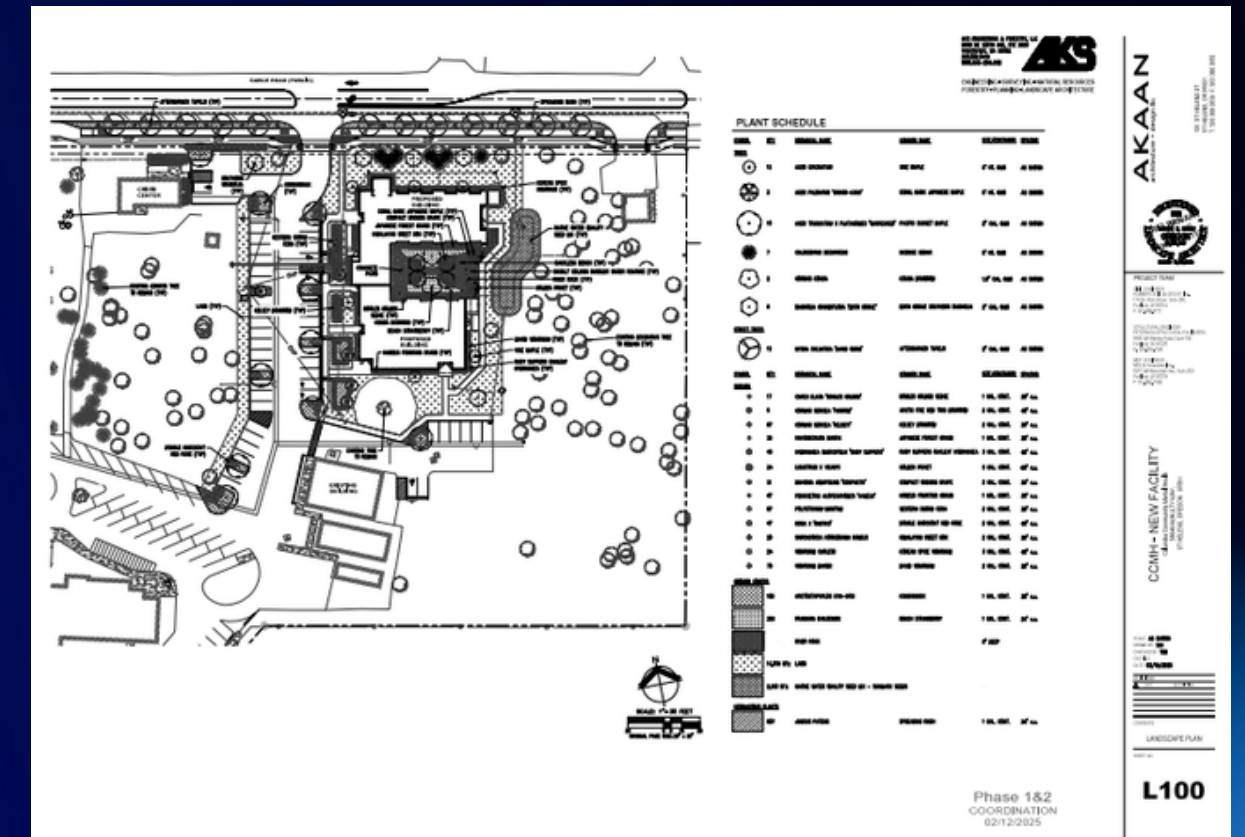
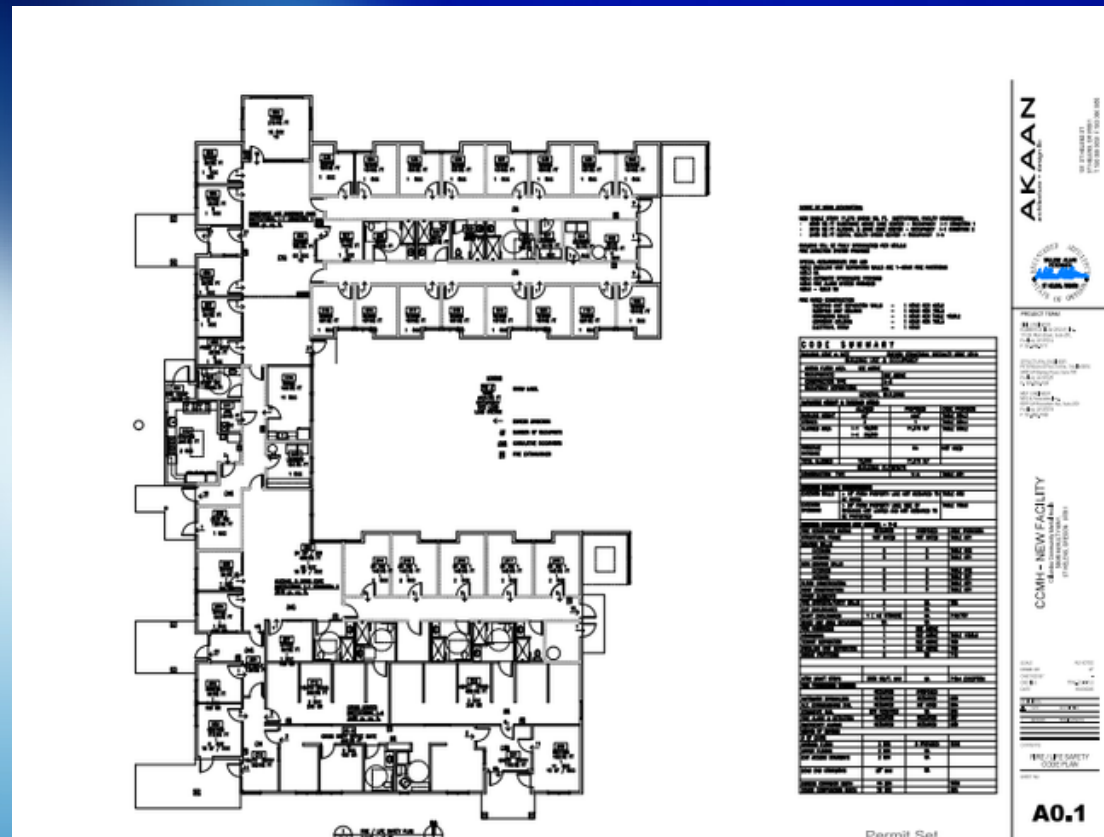


CCMH STRATEGIC UPDA

- **New Facility Development**
- **Core Service Responsibilities**
- **Federal Funding Impacts**
- **Community Partnerships**

Todd Jacobson
Executive Director

CCMH NEW DEVELOPMENT



CCMH NEW DEVELOPMENT

- 16-bed Substance Use Disorder Facility (Replace current facility on 4th street)
- 10-bed Detox facility (developing based on community feedback)
- 5-bed adult and 3-bed youth Crisis Stabilization Center

Support law enforcement and families

Reduce transports to inpatient care

Prevent escalation of crisis situations

COLUMBIA COUNTY'S LOCAL

Columbia County is required to:

- Assess local behavioral health needs
- Adopt a comprehensive service delivery plan
- Deliver core service areas outlined in the CFAA
- Maintain financial accountability through budget reporting

CORE SERVICE AREAS

System Management & Coordination:

- Protective Services Crisis Services

Residential & Housing Support Services:

- Housing Coordination

Crisis Services:

- Mobile Crisis Intervention Services
- Mobile Response & Stabilization Services
- Crisis Stabilization Centers
- County Crisis Lines

Forensic & Involuntary Services:

- Aid & Assist
- Psychiatric and Security Review Board (PSRB)
- Civil Commitment
- Forensic Diversion

CORE SERVICE AREAS CONTINUED

Outpatient & Community Based Services:

- Early Assessment and Support Alliance (EASA)
- Gero-Specialist Service
- Assertive Community Treatment (ACT)
- Individual Placement and Supports - Supported Employment (SE)

Ongoing treatment delivered in a community setting including, but not limited to:

- Individual therapy
- Group therapy
- Medication management
- Skills training
- Case management

Intensive Outpatient Programs : Increased service frequency and intensive therapy.

Aftercare and Recovery Support : Ongoing support Services to help Individuals maintain their recovery and reintegrate into the community.

Services to Remove Barriers to Community -Based Care: Interpretation services, medical/medications, costs of establishing guardianship.

THE FUTURE THE NEXT 1 TO 5 YEARS

Impacts of Federal Funding Cuts

and what those cuts mean to Columbia County:

- Work/Volunteer/Educations requirements begin for enhanced OHP population.
- Safe Harbor threshold (existing provider taxes) starts to be reduced.
- Eligibility redeterminations every six months, rather than yearly.
- Retroactive coverage is limited to one month prior to application of benefits.

These requirements will reduce the number of Columbia County residents who are eligible for care at CCMH under OHP. This could potentially affect up to **6,500 residents.**

THE FUTURE CONTINUED

CCMH and Columbia County will adjust to these changes.

CCMH is requesting community partners meet with us
to design engagement strategies
so that people who fall off OHP
can still receive some
level of support to keep them safe and in the
community.

A challenge we cannot solve locally is the statewide and national workforce shortage in
healthcare.

Q&A

Questions or Discussion

THANK YOU

Todd Jacobson
Executive Director
503-438-2201
toddj@ccmh1.com

