

BEFORE THE BOARD OF COUNTY COMMISSIONERS  
FOR COLUMBIA COUNTY, OREGON

In the Matter of Adopting the )  
2012-2013 Columbia County ) RESOLUTION NO. 21 - 2012  
Community Corrections Plan )  
\_\_\_\_\_ )

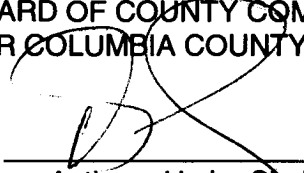
WHEREAS, the Director of Columbia County Community Corrections has presented the 2012-2013 Columbia County Community Corrections Plan to the Board of County Commissioners for their consideration and adoption; and

WHEREAS, the Columbia County Local Public Safety Coordinating Council has reviewed the Plan and recommends that it be adopted.

NOW, THEREFORE, IT IS HEREBY RESOLVED that the 2012-2013 Columbia County Community Corrections Plan be, and hereby is, adopted.

Dated at St. Helens, Oregon, this 6<sup>th</sup> day of June, 2012.

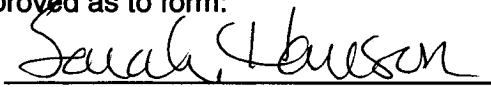
BOARD OF COUNTY COMMISSIONERS  
FOR COLUMBIA COUNTY, OREGON

By:   
Anthony Hyde, Chair

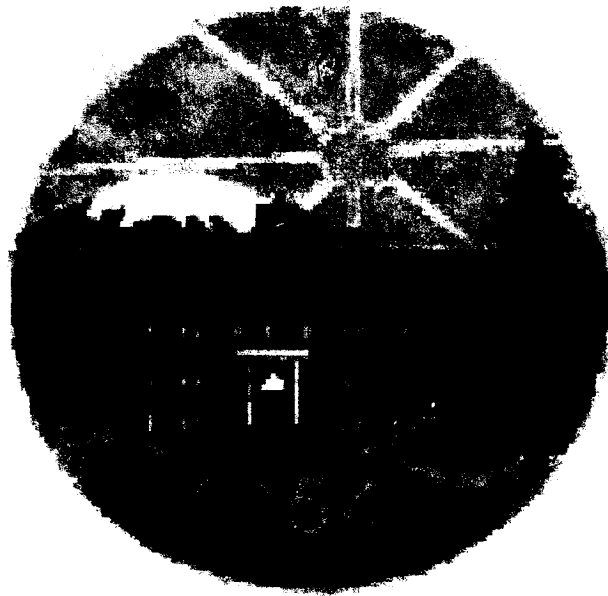
By:   
Earl Fisher, Commissioner

By:   
Henry Heimuller, Commissioner

Approved as to form:

By:   
Office of County Counsel

**COLUMBIA COUNTY**



**OREGON**

**2012 - 2013  
COMMUNITY CORRECTIONS  
PLAN**

Columbia County  
2012-2013 Community Corrections Plan

Department of Corrections  
2575 Center Street NE  
Salem, Oregon 97310

*For Office Use Only*

*Date Received:*

**Address:** 901 Port Avenue  
St. Helens, OR 97051

**Telephone:** 503-397-6253

**Fax:** 503-397-6645

*Community Corrections Director/Manager:*

**Walt Pesterfield**

**Address:** 901 Port Avenue

**Phone:** 503-366-4660      **Fax:** 503-397-6645

**Email:** Walt.Pesterfield@co.columbia.or.us

*Sheriff:*

**Jeff Dickerson**

**Address:** 901 Port Avenue

**Phone:** 503-366-4600      **Fax:** 503-366-4644

**Email:** Jeff.Dickerson@co.columbia.or.us

*Jail Manager:*

**Undersheriff, Andy Moyer**

**Address:** 901 Port Avenue

**Phone:** 503-366-4621      **Fax:** 503-366-4644

**Email:** Andy.Moyer@co.columbia.or.us

*Supervisory Authority:*

**Sheriff, Jeff Dickerson**

**Address:** 901 Port Avenue

**Phone:** 503-366-4600      **Fax:** 503-366-4644

**Email:** Jeff.Dickerson@co.columbia.or.us

*Supervisory Authority:*

**Undersheriff, Andy Moyer**

**Address:** 901 Port Avenue

**Phone:** 503-366-4601      **Fax:** 503-366-4644

**Email:** Andy.Moyer@co.columbia.or.us

*LPSCC Contact:*

**Linda Hald**

**Address:** 901 Port Avenue

**Phone:** 503-366-4661      **Fax:** 503-397-6645

**Email:** Linda.Hald@co.columbia.or.us

**\*\*\*\* NOTE - This plan reflects programs and funding for one year - FY 2012 - 2013**

**Biennial Budget**

State Grant-In-Aid	\$1,164,479.00
Inmate Welfare Release Subsidy Fund	\$3,808.00
County General Fund	\$0.00
Supervision Fees	\$100,000.00
Other Fees	\$98,000.00
Other	\$216,034.00
Other - M57	\$63,315.00
<b>TOTAL</b>	<b>\$1,645,636.00</b>

**TABLE OF CONTENTS**

**ADMINISTRATION**  
Resolution from the Board of County Commissioners ..... 1  
Letter of transmittal from the Local Public Safety Coordinating Council ..... 2  
County Organizational Chart ..... 3  
LPSCC Membership Roster ..... 4

**BUDGET**  
Budget Summary ..... 5

**SUMMARY**  
Columbia County ..... 6  
Local Public Safety Coordinating Council ..... 7  
Community Corrections ..... 7  
Evidence Based Practices ..... 8  
Supervisory Authority ..... 9  
Columbia County Sheriff's Office and Jail ..... 9

**COMMUNITY CORRECTIONS PROGRAM DESCRIPTIONS**  
Administration ..... 12  
Parole & Probation Supervision ..... 13  
Substance Abuse Treatment ..... 14  
Sex Offender Treatment ..... 15  
Domestic Violence Treatment ..... 16  
Mental Health Services ..... 17  
Transition Services/Subsidy ..... 18  
Columbia County Drug Court ..... 19  
Community Service/Work Crew ..... 20  
Custodial Sanction Beds ..... 21  
Structured Sanctions ..... 22  
Alcohol & Drug Evaluations ..... 23  
Cognitive Programs ..... 24  
Electronic Monitoring ..... 25

**SANCTIONS & SERVICES** ..... 26

BOC Resolution

**COLUMBIA COUNTY  
LOCAL PUBLIC SAFETY COORDINATING COUNCIL  
901 PORT AVENUE  
ST. HELENS, OR 97051  
Jenefer S. Grant, Chair**



April 23, 2012

Columbia County board of Commissioners  
230 Strand Street  
St. Helens, OR 97051

Oregon Department of Corrections  
Community Services  
2575 Center Street NE  
Salem, OR 97301

To the Board of Commissioners and the Oregon Department of Corrections:

On behalf of the Columbia County Local Public Safety Coordinating Council and Columbia County Community Corrections, we are pleased to present the Community Corrections 2012 - 2013 Plan. The Local Public Safety Coordinating Council has reviewed the proposed Community Corrections Plan and recommends to the Columbia County Board of Commissioners that the plan be adopted.

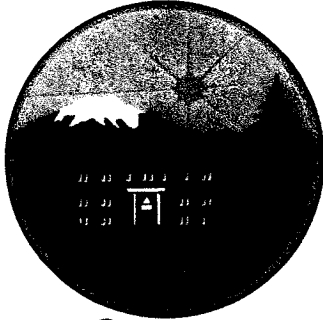
The document reflects traditional correction's programs in the County. Columbia County continues to move the department toward correctional practices required by the 2003 Legislative Assembly, commonly referred to as Evidence Based Practices. Officers in the department receive in-depth training in motivational interviewing, risk and needs assessment using the LS/CMI, and promoting pro-social stages of change aimed at reducing the risk of criminal recidivism. We continue to prepare for the next plan. Like many programs, the administration of corrections programs within the framework of local criminal justice is an evolving process.

Sincerely,

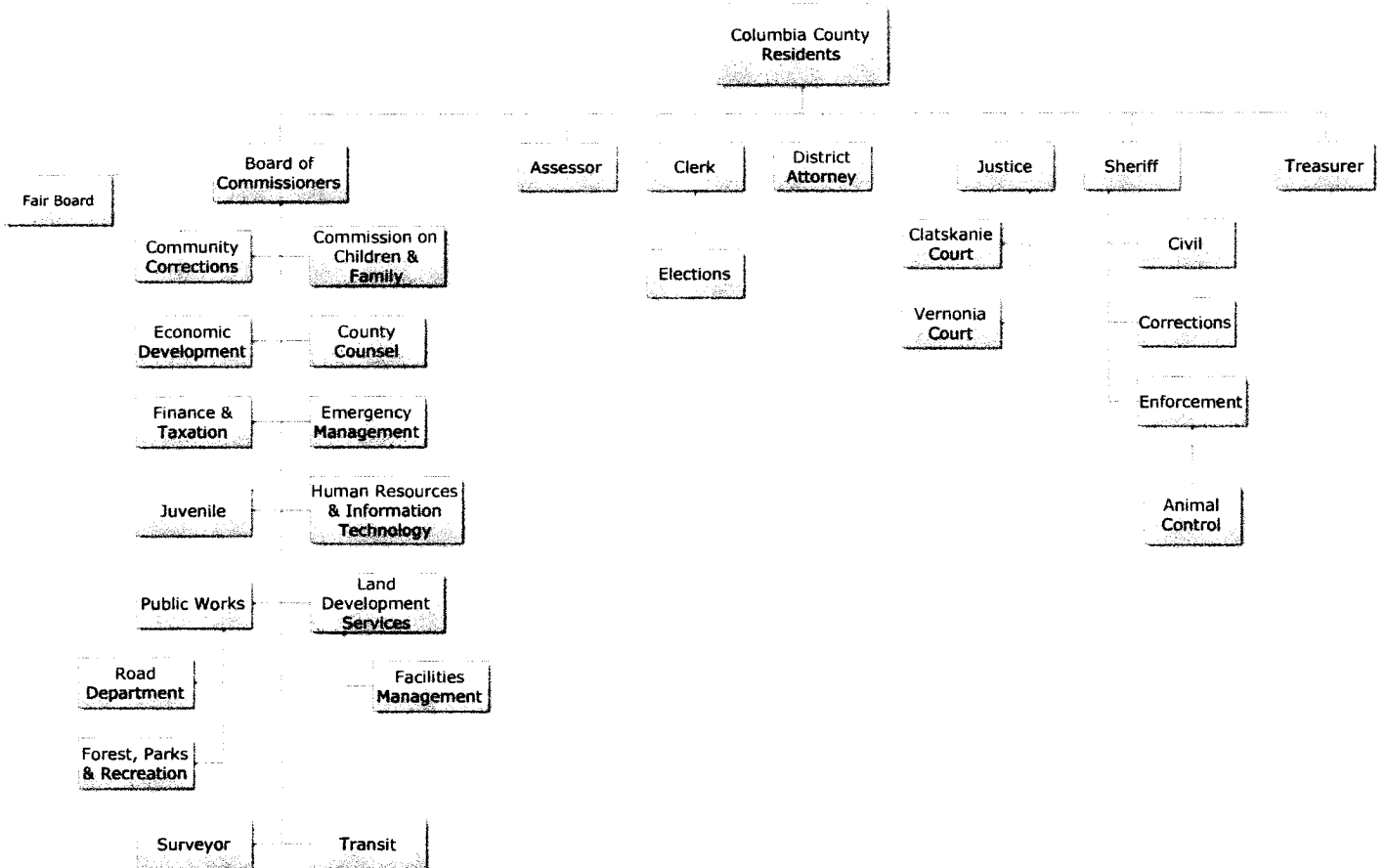
A handwritten signature in cursive script that reads 'Jenefer S. Grant'.

Jenefer S. Grant  
LPSCC Chair

# Columbia County



Oregon



**LOCAL PUBLIC SAFETY COORDINATING COUNCIL  
COLUMBIA COUNTY**

Tony Hyde, Commissioner  
230 Strand Street  
St. Helens, OR 97051  
503-397-4322  
[Tony.Hyde@co.columbia.or.us](mailto:Tony.Hyde@co.columbia.or.us)

Sheriff Jeff Dickerson  
901 Port Avenue  
St. Helens, OR 97051  
503-366-4600  
[Jeff.Dickerson@co.columbia.or.us](mailto:Jeff.Dickerson@co.columbia.or.us)

Steve Atchison, District Attorney  
230 Strand Street  
St. Helens, OR 97051  
503-397-0300 Ext 8301  
[Steve.Atchison@co.columbia.or.us](mailto:Steve.Atchison@co.columbia.or.us)

Judge Ted E. Grove  
230 Strand Street  
St. Helens, OR 97051  
503-397-2327 Ext 314  
[Ted.E.Grove@state.or.us](mailto:Ted.E.Grove@state.or.us)

Judge Steven B. Reed  
230 Strand Street  
St. Helens, OR 97051  
503-397-2327 Ext 324  
[Steve.B.Reed@state.or.us](mailto:Steve.B.Reed@state.or.us)

Judge Jenefer S. Grant  
230 Strand Street  
St. Helens, OR 97051  
503-397-2327 Ext 317  
[Jenefer.S.Grant@state.or.us](mailto:Jenefer.S.Grant@state.or.us)

**Chair**

Walt Pesterfield, Director  
Community Corrections  
901 Port Avenue  
St. Helens, OR 97051  
503-366-4660  
[Walt.Pesterfield@co.columbia.or.us](mailto:Walt.Pesterfield@co.columbia.or.us)

Chief Steve Salle'  
St. Helens Police Department  
150 S. 13th Street  
St. Helens, OR 97051  
503-397-3333  
[SteveS@ci.st-helens.or.us](mailto:SteveS@ci.st-helens.or.us)

**Vice-Chair**

Yvette Sherherd  
Oregon State Police  
500 N Columbia River Hwy  
St. Helens, OR 97051  
503-397-0325  
[yvette.shepherd@state.or.us](mailto:yvette.shepherd@state.or.us)

Stacia Tyacke, Director  
Juvenile Department  
230 Strand Street  
St. Helens, OR 97051  
503-397-0275 Ext 8474  
[Stacia.Tyack@co.columbia.or.us](mailto:Stacia.Tyack@co.columbia.or.us)

Linda Hald  
Office Manager, Comm. Corr  
901 Port Avenue  
St. Helens, OR 97051  
503-366-4661  
[Linda.Hald@co.columbia.or.us](mailto:Linda.Hald@co.columbia.or.us)  
**LPSCC Support**

Cathy Baird  
Oregon Youth Authority  
1600 SW Cedar Hills Blvd., Ste. 100  
Portland, OR 97225  
503-672-9569 Ext 223  
[Cathy.Baird@oya.state.or.us](mailto:Cathy.Baird@oya.state.or.us)

Mike Elsasser  
Columbia Community Mental Health  
PO Box 1234  
St. Helens, OR 97051  
503-397-5211  
[Mikee@ccmh1.com](mailto:Mikee@ccmh1.com)

Jean Marie Martwick  
Attorney At Law  
PO Box 1065  
Scappoose, OR 97056  
503-543-2961  
[Martwicklaw@yahoo.com](mailto:Martwicklaw@yahoo.com)

Jodi Gartman  
Columbia County Consortium  
255 South 1<sup>st</sup> Street  
St. Helens, OR 97051  
503-366-1790  
[ccconsortium@gmail.com](mailto:ccconsortium@gmail.com)



**COLUMBIA COUNTY**  
**2012-2013 Community Corrections Budget Summary**

<b>Program Name</b>	<b>Grant in Aid Fund</b>	<b>Release Subsidy Fund</b>	<b>Other Funds and Fees</b>	<b>Total</b>
Administration	\$361,426.00			\$361,426.00
Parole & Probation Supervision	\$546,868.00		\$180,731.00	\$727,599.00
Substance Abuse Treatment			\$50,000.00	\$50,000.00
Sex Offender Treatment			\$10,000.00	\$10,000.00
Domestic Violence Treatment			\$5,000.00	\$5,000.00
Mental Health Services			\$5,000.00	\$5,000.00
Transitional services/subsidy		\$3,808.00	\$25,372.00	\$29,180.00
Columbia County Drug Court			\$45,619.00	\$45,619.00
Community Service/Work Crew			\$101,087.00	\$101,087.00
Custodial Sanction Beds	\$256,185.00			\$256,185.00
Sanctions			\$20,000.00	\$20,000.00
Alcohol & Drug Evaluations			\$19,540.00	\$19,540.00
Cognitive Programs			\$10,000.00	\$10,000.00
Electronic Monitoring			\$5,000.00	\$5,000.00
<b>Total</b>	<b>\$1,164,489.00</b>	<b>\$3,808.00</b>	<b>\$377,739.00</b>	<b>\$1,546,036.00</b>

## **COLUMBIA COUNTY**

Columbia County is located in the northwest region of the state. It is bordered on the east by the Columbia River, on the south by Multnomah County and Washington County, and on the west by Clatsop County. The county's northern and eastern boundaries are outlined by 62 miles of the Columbia River shoreline.

- Population: 49,430 (2010)
- Poverty rate: 13.5%
- County unemployment rate: 12.6%
- Statewide unemployment rate: 10.9%
  
- Crime in Oregon has decreased 3.9% overall in 2008 when compared to 2007. Crime increased in 8 of the 36 counties in Oregon - Benton, Lane, Deschutes, Curry, Josephine, Jackson, Gilliam & Harney.
  
- *Columbia County Summary of Crimes:*
  - Crimes Against Persons:** (Willful Murder, Negligent Homicide, Forcible Rape, Other Sex Crimes, Kidnaping, Robbery, Aggravated Assault, Simple Assault)
    - 2008 Total: 243
    - 2007 Total: 264
  - Crimes Against Property:** (Burglary, Larceny, Motor Vehicle Theft, Arson, Forgery, Fraud, Embezzlement, Stolen Property, Vandalism)
    - 2008 Total: 1,008
    - 2007 Total: 1,307
  - Behavioral Crimes:** (Weapon Laws, Prostitution, Drug Laws, Gambling, Crimes Against Family, DUII, Liquor Laws, Disorderly Conduct, Curfew, Runaway Juveniles)
    - 2008 Total: 1,412
    - 2007 Total: 1,938

## **LOCAL PUBLIC SAFETY COORDINATING COUNCIL**

**MISSION STATEMENT:** *“ To promote public safety by developing policies and procedures that create an effective criminal and juvenile system including managing the offender population through prevention, intervention and accountability.”*

Columbia's County's LPSCC meets bimonthly to review public safety concerns. During the last fiscal year, LPSCC has reviewed and endorsed the Sheriff's Office Maximum Facility Population (matrix) system and approved the 2010 - 2011 Community Corrections Plan.

The council is committed to improving the quality of criminal justice throughout the county. Community Corrections and the County Juvenile Department have the support of LPSCC in their endeavor to train staff and implement evidence-based crime prevention programs.

### **COMMUNITY CORRECTIONS**

**MISSION STATEMENT:** *“Reduce criminal conduct through a partnership with communities, human services agencies, and with a continuum of supervision, incarceration, and programming to manage offender behavior.”*

Columbia County Community Corrections supervises approximately 450 adult offenders on parole, post-prison supervision and probation. Columbia County is committed to a value-driven system using evidence-based practices to protect citizens, hold offenders accountable, provide effective treatment programming, and to ensure rapid responses to violations using a continuum of sanctions. Through standardized risk assessments and a specialized sex offender assessment tool, Community Corrections identifies those offenders who pose the greatest risk to the community and focuses the majority of resources and services to medium and high-risk offenders.

Corrections staff consists of a Director, six Parole & Probation Officers, of which one is the Lead PO, one Office Manager, one support staff, one part-time Alcohol & Drug Evaluation Specialist, and one Lead Work Crew Supervisor. Temporary part-time employees are used to provide work crew supervision and support staff back-up. Due to budget shortfalls, two PO positions and one support staff position were eliminated.

Community Corrections partners with local agencies and organizations to ensure the best delivery of services within limited resources. A collaborative effort with the Circuit Court, District Attorney, Columbia County Consortium, and Columbia Community Mental Health, resulted in the formation of the Columbia County Drug Court program. By working together as a team, the agencies seek to provide a variety of programs and consistent supervision geared toward supporting and helping the offender maintain a drug-free life.

## ***EVIDENCE BASED PRACTICE (EBP)***

Community Corrections has developed a comprehensive evidence-based approach that includes both internal coordination of programming aimed at skill development and external coordination of programming aimed at reduction of recidivism. The plan will identify steps necessary to create, implement and maintain a system of services, supervision and sanctions resulting in positive case outcomes and documents the steps taken to achieve such results.

Community Corrections recognizes the need to train and develop staff in research-driven practice. It is intended to outline the goals and objectives of the department, and how to measure our success in the process. Senate Bill 267 requires that corrections, prevention, treatment or intervention programs are intended to reduce future criminal behavior. EBP is the term used in the corrections and treatment fields to encompass an array of practices such as behavioral interventions or motivational interviewing (MI) that have proven effective in reducing recidivism rates. Community Corrections supports a change in the professional culture of Parole and Probation to an active learning and skill building arena in which outcomes will be measured and, in turn, influence the knowledge, skills, and attitudes regarding EBP of staff, and the department itself and the larger system with which we interface. The following three areas are intended to guide our planning:

- \* Program development and EBP infusion in daily department operations
- \* Staff development, training, and measurement skills
- \* Collaboration with community partners and effective service delivery

Within the three focus areas, we will incorporate the following principles for effective EBP interventions:

- \* Access actuarial risk/needs;
- \* Skills training and use cognitive behavioral treatment methods;
- \* Enhance intrinsic motivation;
- \* Target interventions (i.e., criminogenic risk, need, responsivity);
- \* Increase positive reinforcement;
- \* Engage ongoing supports in natural communities;
- \* Measure relevant practices; and
- \* Provide measurement feedback.

## **SUPERVISORY AUTHORITY**

The Columbia County Supervisory Authority is Sheriff Jeff Dickerson. The Supervisory Authority manages the sentenced inmate population, moving offenders between jail and other custodial programs. He is responsible for reviewing release plans, imposing conditions of supervision, and imposing sanctions including revocation. Community Corrections staff provides recommendations for post-prison supervision conditions of local control offenders via release plans. Staff also acts as liaison between alternative sanction programs.

Release planning is an integral part of the Supervisory Authority mission. Personnel involved in release planning will always consider victims when planning for the release of inmates. Inmates who are convicted of crimes of violence or person crimes such as sexual abuse, rape, domestic violence or assault must be thoroughly investigated by personnel before a release plan can be considered.

## **COLUMBIA COUNTY SHERIFF'S OFFICE AND JAIL**

*MISSION STATEMENT: "The Columbia County Sheriff is committed to working in partnership with our community to improve the quality of life in the county. The Sheriff's Office is dedicated to solving community problems, the reduction of crime, and the preservation of laws, ordinances, and the constitutional rights of all people within our jurisdiction."*

The mandate of all sheriffs in Oregon is to conserve the peace in our community by: investigating violations of law and bringing the perpetrators to justice; standing guard against those who would seek to undermine the peace in the county; maintaining the county jail for detaining and correcting all those who break the peace in the county; executing all warrants and other processes of the courts or judicial officers thereof; and conducting all search and rescue efforts within the county.

All employees and volunteers with the Columbia County Sheriff's Office adhere to the following values and goals:

### **VALUES**

- Dedication to achieving the mission of the Sheriff's Office;
- Support and encouragement for positive contributions and innovations in achieving the organization's goals;
- Empowerment of employees and volunteers to make decisions that effectively solve community problems; and
- Development of organizational pride and respect for oneself and others to ensure professional growth and teamwork.

### **Goals**

- To protect life, liberty and property;
- To reduce criminal activity and opportunity;
- To preserve civil order; and
- To provide assistance and customer service to the community and to the public safety agencies with which we work - through education, advice, community involvement and proactive law enforcement operations.

Oregon law requires the Sheriff to operate a jail to lodge adult pre-trial and sentenced offenders. Jails do much more than simply house prisoners. The jail staff is responsible for inmate admissions, facilitating inmate movement, and transporting prisoners to other jail facilities, and often, inmates are shuttled to the local courthouse. Jail staff must cooperatively deal with problem inmates or inmate medical issues.

The Columbia County Jail has a total capacity of 255 beds with a capacity of 150 operational beds. Jail staff processes between 6,000 and 10,000 inmates throughout the year. Most Local Control offenders are required to serve 80% of their sentence before being furloughed to alternative programming. With the downsizing and closure of the state mental hospitals, many people who would be treated in a medical setting now inhabit Oregon jails. Additionally, 85% of jail inmates have drug and alcohol addictions or abuse problems and are often initially arrested while under the influence of at least one substance. This makes them a highly volatile group.

Columbia County has entered into agreements with the Federal US Marshall, US Immigration and the Oregon Department of Corrections to rent jail beds that are not filled with the local inmate population. Bed rentals have helped subsidize the rising cost of operating the jail. The Columbia County jail also charges an "Inmate Housing Fee" to all offenders housed in the facility except those offenders housed in contracted rental beds.

***COMMUNITY***  
***CORRECTIONS***  
***PROGRAMS***

Program Name:	ADMINISTRATION
Program Category:	Administration
Program Description:	Provide planning, management and administration services to the Department. Responsible for development and implementation of programs, budget preparation, policy development, and the day to day operations of Community Corrections.
Program Objective(s):	Monitor budget, Intergovernmental Agreements, personal services contracts, and operational policies and procedures to ensure the mission is being accomplished and performance outcomes are met. This program includes the administrative fee paid to the County general fund.
Method(s) of Evaluation:	Monthly statistical data and annual report

Monthly Average to be Served: **N/A**

- |   |                                      |                                 |                                  |
|---|--------------------------------------|---------------------------------|----------------------------------|
| Type of Offender(s) Served:                 | Crime Category:                      | Gender:                         | Risk Level:                      |
| <input type="checkbox"/> Probation          | <input type="checkbox"/> Felony      | <input type="checkbox"/> Male   | <input type="checkbox"/> High    |
| <input type="checkbox"/> Parole/Post-Prison | <input type="checkbox"/> Misdemeanor | <input type="checkbox"/> Female | <input type="checkbox"/> Medium  |
| <input type="checkbox"/> Local Control      |                                      |                                 | <input type="checkbox"/> Low     |
|   |                                      |                                 | <input type="checkbox"/> Limited |

Which Treatment Provider(s) Will You Use Within this Program?

Provider Name	Treatment Type (ie, Anger Management, Cognitive, DV, Dual Diagnosis, Sex Offender, Inpatient Substance Abuse, or Outpatient Substance Abuse_	CPC Y/N?	If Yes, Overall Score
		<input type="checkbox"/> Yes <input type="checkbox"/> No	
		<input type="checkbox"/> Yes <input type="checkbox"/> No	
		<input type="checkbox"/> Yes <input type="checkbox"/> No	

Funding Sources

- State Grant-In-Aid Fund \$ 361,426.00
- Inmate Welfare Release Subsidy Fund \$
- County General Fund \$
- Supervision Fees \$
- Other \$

Additional Comments:



Program Name:	<b>PAROLE &amp; PROBATION SUPERVISION</b>
Program Category:	Supervision
Program Description:	Provide supervision to parole, post-prison, and probation offenders residing in Columbia County. Supervision includes, but not limited to office contacts, residence checks, monitoring and collection of court-ordered financial obligations, imposition of structured sanctions, referrals to treatment, assessments of offender risk (LSCMI), pre-sentence investigation reports, monitoring for substance abuse. Officers complete in-state and out-of-state investigations and release plans for each offender released onto parole or post-prison supervision. Caseloads are assigned by geographical location with specialized caseloads of domestic violence and sex offenders.
Program Objective(s):	Offender supervision using OCMS, contact standards will be met; Court ordered financial obligations including restitution, fines, unitary assessments, attorney fees, and supervision fees will be monitored by supervising officers; Columbia County will strive to maintain a successful case closure rate. Officers will use all reasonable means to locate an offender before closing to warrant status; Random urinalysis samples will be obtained from all offenders with a history of substance abuse or when the supervising officer has reasonable grounds to suspect the offender has been using controlled substances.
Method(s) of Evaluation:	Contact standards will be measured by annual caseload audits and reflected in the yearly performance outcome report. Electronic audits of caseloads will be used to monitor referrals to programs, contacts, urinalysis, payment of fees, fines and restitution and staff consultations will be accomplished to determine if program objectives are achieved.

Monthly Average to be Served: **425**

- |   |  |                                       |                                       |
|---|--|---------------------------------------|---------------------------------------|
| Type of Offender(s) Served:                         | Crime Category:                              | Gender:                               | Risk Level:                           |
| <input checked="" type="radio"/> Probation          | <input checked="" type="radio"/> Felony      | <input checked="" type="radio"/> Male | <input checked="" type="radio"/> High |
| <input checked="" type="radio"/> Parole/Post-Prison | <input checked="" type="radio"/> Misdemeanor | <input type="radio"/> Female          | <input type="radio"/> Medium          |
| <input type="radio"/> Local Control                 |  |                                       | <input type="radio"/> Low             |
|   |  |                                       | <input type="radio"/> Limited         |

Which Treatment Provider(s) Will You Use Within this Program?

Provider Name	Treatment Type (i.e., Anger Management, Cognitive, DV, Dual diagnosis, Sex Offender, Inpatient Substance Abuse, or Outpatient Substance Abuse_	CPC Y/N?	If Yes, Overall Score
		<input type="checkbox"/> Yes <input type="checkbox"/> No	
		<input type="checkbox"/> Yes <input type="checkbox"/> No	

Funding Sources

- |                                  |                                     |               |
|----------------------------------|-------------------------------------|---------------|
| <input checked="" type="radio"/> | State Grant-In-Aid Fund             | \$ 546,868.00 |
| <input type="checkbox"/>         | Inmate Welfare Release Subsidy Fund | \$            |
| <input type="checkbox"/>         | County General Fund                 | \$            |
| <input checked="" type="radio"/> | Supervision Fees                    | \$ 100,000.00 |
| <input checked="" type="radio"/> | Other Fees                          | \$ 80,731.00  |

Additional Comments:

Program Name:	<b>SUBSTANCE ABUSE TREATMENT</b>
Program Category:	Substance Abuse
Program Description:	Provide residential and outpatient substance abuse treatment services for indigent offenders. All substance abuse treatment groups are cognitive-based programs designed to address thinking errors and thereby change behavior. Offenders are required to pay a portion of treatment costs based on a sliding fee scale; no offender is refused treatment due to inability to pay. Offenders assessed to need intensive residential treatment will be referred to appropriate programs followed by aftercare services. Measure 57 funds will be used to pay for treatment costs on all eligible offenders.
Program Objective(s):	Offenders needing treatment will be evaluated and referred to treatment programs. Offenders will submit to random urinalysis testing. TCUDS will be completed on all offenders eligible under Measure 57.
Method(s) of Evaluation:	Periodic electronic audits of the CIS treatment module and staff consultation will be accomplished to determine if program objectives are achieved.

Monthly Average to be Served: **45**

Type of Offender(s) Served:

- Probation
- Parole/Post-Prison
- Local Control

Crime Category:

- Felony
- Misdemeanor

Gender:

- Male
- Female

Risk Level:

- High
- Medium
- Low
- Limited

**Which Treatment Provider(s) Will You Use Within this Program?**

Provider Name	Treatment Type (i.e., Anger Management, Cognitive, DV, Dual diagnosis, Sex Offender, Inpatient Substance Abuse, or Outpatient Substance Abuse_	CPC Y/N?	If Yes, Overall Score
Columbia Community Mental Health	Outpatient Substance Abuse	<input checked="" type="radio"/> Yes <input type="checkbox"/> No	SATN
Pathways	Residential Substance Abuse	<input checked="" type="radio"/> Yes <input type="checkbox"/> No	SAT
		<input type="checkbox"/> Yes <input type="checkbox"/> No	

**Funding Sources**

- State Grant-In-Aid Fund \$
- Inmate Welfare Release Subsidy Fund \$
- County General Fund \$
- Supervision Fees \$
- M57 Funds \$ 27,900.00
- Other \$ 22,100.00

Additional Comments:

Program Name:	<b>SEX OFFENDER TREATMENT SERVICES</b>
Program Category:	Sex Offender Services
Program Description:	To provide treatment to offenders convicted of sex offenses or ordered to complete sex offender treatment by the Court and will include group and individual treatment to assist in providing behavior control to offenders. Treatment will include polygraph and plethysmograph testing.
Program Objective(s):	All offenders needing treatment will be referred and will include plethysmograph and polygraph testing.
Method(s) of Evaluation:	Periodic electronic audits of the CIS treatment module and staff consultations will be accomplished to determine if program objectives are reached.

Monthly Average to be Served: **25 - 30**

- |   |   |  |  |
|---|---|--|--|
| Type of Offender(s) Served:   | Crime Category:   | Gender:  | Risk Level:  |
| <input checked="" type="radio"/> Probation<br><input checked="" type="radio"/> Parole/Post-Prison<br><input checked="" type="radio"/> Local Control | <input checked="" type="radio"/> Felony<br><input checked="" type="radio"/> Misdemeanor | <input checked="" type="radio"/> Male<br><input checked="" type="radio"/> Female | <input checked="" type="radio"/> High<br><input checked="" type="radio"/> Medium<br><input checked="" type="radio"/> Low<br><input checked="" type="radio"/> Limited |

Which Treatment Provider(s) Will You Use Within this Program?

Provider Name	Treatment Type <small>(ie, Anger Management, Cognitive, DV, Dual Diagnosis, Sex Offender, Inpatient Substance Abuse, or Outpatient Substance Abuse_</small>	CPC Y/N?	If Yes, Overall Score
Casey Weber & Associates	Sex Offender Treatment	<input checked="" type="radio"/> Yes <input type="radio"/> No	SAT
Sexual Abuse Clinic	Sex Offender Evaluation & Treatment	<input checked="" type="radio"/> Yes <input type="radio"/> No	SAT

Funding Sources

- |  |              |
|--|--------------|
| <input type="checkbox"/> State Grant-In-Aid Fund             | \$           |
| <input type="checkbox"/> Inmate Welfare Release Subsidy Fund | \$           |
| <input type="checkbox"/> County General Fund                 | \$           |
| <input type="checkbox"/> Supervision Fees                    | \$           |
| <input checked="" type="checkbox"/> Other Fees               | \$ 10,000.00 |
| <input type="checkbox"/> Other                               | \$           |

Additional Comments:

Program Name:	<b>DOMESTIC VIOLENCE TREATMENT SERVICES</b>
Program Category:	Other programs
Program Description:	Domestic violence and anger management treatment is a comprehensive program to evaluate and treat offenders who have been convicted of or display assaultive behavior. The program consists of education and treatment to prevent further violence. It includes individual and group therapy sessions and tools to help the offender understand and manage anger and behavior without violence. Officers work closely with treatment providers to insure compliance and focuses on achieving behavioral change through mandated participation in counseling.
Program Objective(s):	Offenders ordered to treatment will be referred to appropriate programs.
Method(s) of Evaluation:	Periodic electronic audits of CIS conditions and treatment module will be accomplished to determine if program objectives are achieved.

Monthly Average to be Served: 30

Type of Offender(s) Served:

- Probation
- Parole/Post-Prison
- Local Control

Crime Category:

- Felony
- Misdemeanor

Gender:

- Male
- Female

Risk Level:

- High
- Medium
- Low
- Limited

Which Treatment Provider(s) Will You Use Within this Program?

Provider Name	Treatment Type (ie. Anger Management, Cognitive, DV, Dual Diagnosis, Sex Offender, Inpatient Substance Abuse, or Outpatient Substance Abuse_	CPC Y/N?	If Yes, Overall Score
Columbia Community Mental Health	DV; Anger Management	<input type="checkbox"/> Yes <input checked="" type="radio"/> No	
Counseling & Wellness	DV Evaluation & Treatment	<input type="checkbox"/> Yes <input checked="" type="radio"/> No	
		<input type="checkbox"/> Yes <input type="checkbox"/> No	

Funding Sources

- State Grant-In-Aid Fund \$
- Inmate Welfare Release Subsidy Fund \$
- County General Fund \$
- Supervision Fees \$
- Other Fees \$ 5,000.00
- Other \$

Program Name:	<b>MENTAL HEALTH SERVICES</b>
Program Category:	Mental Health Services
Program Description:	Seek services for individuals with mental illnesses who are involved in the criminal justice system with the goal of increasing their ability to return to full and productive lives in the community. Services will include evaluation, counseling, and prescription drug management.
Program Objective(s):	Refer offenders to treatment services who have been ordered to enter and complete a mental health program or offenders who are identified as needing mental health services.
Method(s) of Evaluation:	Electronic audits of the CIS treatment module and staff consultations will be accomplished to determine if the program objectives are achieved.

Monthly Average to be Served: **10**

- |   |  |                                       |  |
|---|--|---------------------------------------|--|
| Type of Offender(s) Served:                         | Crime Category:                              | Gender:                               | Risk Level:                              |
| <input checked="" type="radio"/> Probation          | <input checked="" type="radio"/> Felony      | <input checked="" type="radio"/> Male | <input checked="" type="radio"/> High    |
| <input checked="" type="radio"/> Parole/Post-Prison | <input checked="" type="radio"/> Misdemeanor | <input type="radio"/> Female          | <input checked="" type="radio"/> Medium  |
| <input checked="" type="radio"/> Local Control      |  |                                       | <input checked="" type="radio"/> Low     |
|   |  |                                       | <input checked="" type="radio"/> Limited |

Which Treatment Provider(s) Will You Use Within this Program?

Provider Name	Treatment Type (ie, Anger Management, Cognitive, DV, Dual Diagnosis, Sex Offender, Inpatient Substance Abuse, or Outpatient Substance Abuse_	CPC Y/N?	If Yes, Overall Score
Columbia Community Mental Health	Mental health evaluation & treatment; prescription drug management	<input checked="" type="radio"/> Yes <input type="radio"/> No	SATN
		<input type="radio"/> Yes <input type="radio"/> No	

Funding Sources

- |  |             |
|--|-------------|
| <input type="checkbox"/> State Grant-In-Aid Fund             | \$          |
| <input type="checkbox"/> Inmate Welfare Release Subsidy Fund | \$          |
| <input type="checkbox"/> County General Fund                 | \$          |
| <input type="checkbox"/> Supervision Fees                    | \$          |
| <input checked="" type="radio"/> Other Fees                  | \$ 5,000.00 |
| <input type="checkbox"/> Other                               | \$          |

Additional Comments:

Program Name:	<b>TRANSITIONAL SERVICES/SUBSIDY</b>
Program Category:	Transition Services
Program Description:	Services are provided to incarcerated offenders to assist in the transition from custody to the community. Transition services provide release planning, financial assistance for offenders to purchase food, transportation, work clothing, crisis and transition housing. It also provides assistance to offenders for treatment, employment, and other services to enhance productiveness in the community. Residents of the Transitional Housing Facility are required to submit to frequent drug and alcohol testing, random searches, mandatory curfew, household cleaning responsibilities, and participation in the work crew. Release planning also includes coordination of services with appropriate agencies. Services will be subsidized for offenders who qualify for SB 267 - AIP transition funding.
Program Objective(s):	Assist offenders post-incarceration to reconnect with a productive lifestyle, return to or locate a job, or re-establish a family relationship. Utilize available community resources and provide appropriate support to assist in a successful transition back into the community. Provide assistance to offenders in need of transition services and subsidy. Assist all offenders who are eligible for AIP funding.
Method(s) of Evaluation:	The evaluation of this program is measured as an offender successfully transitions back into the community by obtaining employment, attending treatment, establishing family relationships, and securing an appropriate residence. Periodic case audits and staff consultations will be accomplished to determine if the program objectives are achieved. Submit annual AIP funding reports to DOC.

Monthly Average to be Served: **20 - 30**

- |                             |                 |          |             |
|-----------------------------|-----------------|----------|-------------|
| Type of Offender(s) Served: | Crime Category: | Gender:  | Risk Level: |
| ● Probation                 | ● Felony        | ● Male   | ● High      |
| ● Parole/Post-Prison        | ● Misdemeanor   | ● Female | ● Medium    |
| ● Local Control             |                 |          | ● Low       |
|                             |                 |          | ● Limited   |

Which Treatment Provider(s) Will You Use Within this Program?

Provider Name	Treatment Type (ie, Anger Management, Cognitive, DV, Dual Diagnosis, Sex Offender, Inpatient Substance Abuse, or Outpatient Substance Abuse_	CPC Y/N?	If Yes, Overall Score
		<input type="checkbox"/> Yes <input type="checkbox"/> No	
		<input type="checkbox"/> Yes <input type="checkbox"/> No	

**Funding Sources**

- |  |              |
|--|--------------|
| <input type="checkbox"/> State Grant-In-Aid Fund | \$           |
| ● Inmate Welfare Release Subsidy Fund            | \$ 3,808.00  |
| <input type="checkbox"/> County General Fund     | \$           |
| <input type="checkbox"/> Supervision Fees        | \$           |
| ● AIP funding                                    | \$ 5,401.00  |
| ● Other  | \$ 16,268.00 |
| ● M-57   | \$ 3,703.00  |

Program Name:	<b>COLUMBIA COUNTY DRUG COURT</b>
Program Category:	Substance Abuse
Program Description:	Drug Court provides options for offenders charged with crimes that qualify for a conditional discharge or felony diversion, including the opportunity to enter a structured and cooperative process to rehabilitation through an enhanced supervision and treatment process. Offenders are placed under intense supervision to ensure compliance with conditions of supervision, and adherence to treatment conditions. Weekly appearances before the Court occur to enhance communication, offender compliance, and ensure successful completion of all obligations.
Program Objective(s):	All clients will participate in substance abuse treatment as recommended. Timely referrals to treatment will be made. Participants who do not comply with the rules of the Drug Court will be given sanctions as determined by the Drug Court team. All participants will submit to weekly urinalysis testing.
Method(s) of Evaluation:	Case audits and consultation with supervising officers will be accomplished to determine if program objectives are achieved.

Monthly Average to be Served: **10 - 15**

- |                             |                 |          |             |
|-----------------------------|-----------------|----------|-------------|
| Type of Offender(s) Served: | Crime Category: | Gender:  | Risk Level: |
| ● Probation                 | ● Felony        | ● Male   | ● High      |
| ● Parole/Post-Prison        | ● Misdemeanor   | ● Female | ● Medium    |
| ● Local Control             |                 |          | ● Low       |
|                             |                 |          | ● Limited   |

Which Treatment Provider(s) Will You Use Within this Program?

Provider Name	Treatment Type (ie. Anger Management, Cognitive, DV, Dual Diagnosis, Sex Offender, Inpatient Substance Abuse, or Outpatient Substance Abuse_	CPC Y/N?	If Yes, Overall Score
Columbia Community Mental Health	Drug Court A & D	<input checked="" type="checkbox"/> Yes <input type="checkbox"/> No	SATN
		<input type="checkbox"/> Yes <input type="checkbox"/> No	
		<input type="checkbox"/> Yes <input type="checkbox"/> No	

**Funding Sources**

- |  |              |
|--|--------------|
| <input type="checkbox"/> State Grant-In-Aid Fund             | \$           |
| <input type="checkbox"/> Inmate Welfare Release Subsidy Fund | \$           |
| <input type="checkbox"/> County General Fund                 | \$           |
| <input type="checkbox"/> Supervision Fees                    | \$           |
| ● Other Fees   | \$ 13,907.00 |
| ● M-57   | \$ 31,712.00 |

Additional Comments:

Program Name:	<b>COMMUNITY SERVICE AND WORK CREW</b>
Program Category:	Community Service & Work Crew
Program Description:	To provide a sentencing alternative to the Courts and a local intermediate sanction for offenders who fail to comply with conditions of supervision. It is also used as an option to furlough from jail. Participation in work crew is a requirement for all transitional housing residents. Offenders are allowed to participate in the work crew program to work off past due supervision fees.
Program Objective(s):	Provide a non-custody sentencing alternative for the releasing authorities. Provide a cost-effective work force to community agencies. Provide an opportunity for offenders to work in lieu of financial obligations. Offenders failing to complete the program will be referred back to the releasing authority.
Method(s) of Evaluation:	Periodic audits of outcome measures as reported in CIS. The number of participants and hours worked are tracked and reported in the department's annual report.

Monthly Average to be Served: **50 - 75**

- |  |   |  |  |
|--|---|--|--|
| Type of Offender(s) Served:  | Crime Category:   | Gender:  | Risk Level:  |
| <input type="radio"/> Probation<br><input type="radio"/> Parole/Post-Prison<br><input type="radio"/> Local Control | <input type="radio"/> Felony<br><input type="radio"/> Misdemeanor | <input type="radio"/> Male<br><input type="radio"/> Female | <input type="radio"/> High<br><input type="radio"/> Medium<br><input type="radio"/> Low<br><input type="radio"/> Limited |

Which Treatment Provider(s) Will You Use Within this Program?

Provider Name	Treatment Type <small>(ie, Anger Management, Cognitive, DV, Dual Diagnosis, Sex Offender, Inpatient Substance Abuse, or Outpatient Substance Abuse_</small>	CPC Y/N?	If Yes, Overall Score
		<input type="checkbox"/> Yes <input type="checkbox"/> No	
		<input type="checkbox"/> Yes <input type="checkbox"/> No	
		<input type="checkbox"/> Yes <input type="checkbox"/> No	

Funding Sources

- |                                  |                                     |               |
|----------------------------------|-------------------------------------|---------------|
| <input type="checkbox"/>         | State Grant-In-Aid Fund             | \$            |
| <input type="checkbox"/>         | Inmate Welfare Release Subsidy Fund | \$            |
| <input type="checkbox"/>         | County General Fund                 | \$            |
| <input type="checkbox"/>         | Supervision Fees                    | \$            |
| <input checked="" type="radio"/> | Other Fees                          | \$ 101,087.00 |
| <input type="checkbox"/>         | Other                               | \$            |

Additional Comments:



<b>Program Name:</b>	<b>CUSTODIAL/SANCTION BEDS</b>
<b>Program Category:</b>	Custodial/Sanction Beds
<b>Program Description:</b>	Local control incarceration of felony offenders at the Columbia County Justice Facility for sentences or terms of 12 months or less. It includes court sentences, probation revocations, parole and post-prison supervision revocations and administrative sanctions.
<b>Program Objective(s):</b>	Provide a greater control authority over relatively short-term prisoners. Offer a range of sanctions to appropriately respond to violations of conditions of supervision. Incorporate structured and supervised work activities.
<b>Method(s) of Evaluation:</b>	The evaluation of success is for the offender to serve the jail term without incident, participate in available in-custody resources, and make a successful return to the community. Data collection is through a statewide data base and with CIS with results reported in the Department's annual report. Community Corrections staff will track all SB 1145 (Local Control) bed days used in the local facility.

Monthly Average to be Served: 10

Type of Offender(s) Served:

- Probation
- Parole/Post-Prison
- Local Control

Crime Category:

- Felony
- Misdemeanor

Gender:

- Male
- Female

Risk Level:

- High
- Medium
- Low
- Limited

Which Treatment Provider(s) Will You Use Within this Program?

Provider Name	Treatment Type (ie, Anger Management, Cognitive, DV, Dual Diagnosis, Sex Offender, Inpatient Substance Abuse, or Outpatient Substance Abuse_	CPC Y/N?	If Yes, Overall Score
		<input type="checkbox"/> Yes <input type="checkbox"/> No	
		<input type="checkbox"/> Yes <input type="checkbox"/> No	
		<input type="checkbox"/> Yes <input type="checkbox"/> No	

Funding Sources

- State Grant-In-Aid Fund \$ 256,185.00
- Inmate Welfare Release Subsidy Fund \$
- County General Fund \$
- Supervision Fees \$
- Other Fees \$
- Other \$

Additional Comments:

Program Name:	<b>SANCTIONS</b>
Program Category:	Sanctions
Program Description:	Structured Sanctions allows the supervising officer to hold the offender accountable for unacceptable behavior in a consistent manner through imposition of a swift sanction commensurate with the behavior. Structured Sanctions are responses of thirty days or less may include electronic house arrest, restitution/work release, community service or work crew, and jail.
Program Objective(s):	Deliver a swift and sure alternative when an offender violates the terms of supervision.
Method(s) of Evaluation:	Electronic audits of the CIS structured sanction module and staff consultations will be accomplished to determine if the program objectives are achieved. Data will be included in the Department's monthly statistical and annual report.

Monthly Average to be Served: **20 - 30**

- |   |   |  |  |
|---|---|--|--|
| Type of Offender(s) Served:   | Crime Category:   | Gender:  | Risk Level:  |
| <input checked="" type="radio"/> Probation<br><input checked="" type="radio"/> Parole/Post-Prison<br><input checked="" type="radio"/> Local Control | <input checked="" type="radio"/> Felony<br><input checked="" type="radio"/> Misdemeanor | <input checked="" type="radio"/> Male<br><input checked="" type="radio"/> Female | <input checked="" type="radio"/> High<br><input checked="" type="radio"/> Medium<br><input checked="" type="radio"/> Low<br><input checked="" type="radio"/> Limited |

Which Treatment Provider(s) Will You Use Within this Program?

Provider Name	Treatment Type <small>(ie, Anger Management, Cognitive, DV, Dual Diagnosis, Sex Offender, Inpatient Substance Abuse, or Outpatient Substance Abuse_</small>	CPC Y/N?	If Yes, Overall Score
		<input type="checkbox"/> Yes <input type="checkbox"/> No	
		<input type="checkbox"/> Yes <input type="checkbox"/> No	
		<input type="checkbox"/> Yes <input type="checkbox"/> No	

Funding Sources

- |  |              |
|--|--------------|
| <input type="checkbox"/> State Grant-In-Aid Fund             | \$           |
| <input type="checkbox"/> Inmate Welfare Release Subsidy Fund | \$           |
| <input type="checkbox"/> County General Fund                 | \$           |
| <input type="checkbox"/> Supervision Fees                    | \$           |
| <input checked="" type="radio"/> Other Fees                  | \$ 20,000.00 |
| <input type="checkbox"/> Other                               | \$           |

Additional Comments:

Program Name:	<b>ALCOHOL &amp; DRUG EVALUATIONS</b>
Program Category:	Other Services
Program Description:	To evaluate individuals convicted of or granted a diversion for Driving Under the Influence of Intoxicants, Boating Under the Influence of Intoxicants, or Possession of Less than an Ounce of Marijuana. The evaluator completes the required evaluation and refers the individual to state certified treatment programs. The evaluator monitors treatment progress and submits reports to the court. The evaluator is designated by the Courts.
Program Objective(s):	Provide accurate and timely evaluations to all referred offenders. Monitor treatment progress and submit reports on the individuals referred. Submit monthly statistical data. Maintain DUII Evaluation Specialist certification through the State of Oregon Office of Alcohol and Drug.
Method(s) of Evaluation:	The State of Oregon Office of Alcohol & Drug audits the program. Statistical data is included in the Department's annual report.

Monthly Average to be Served: **15**

Type of Offender(s) Served:

- Probation
- Parole/Post-Prison
- Local Control

Crime Category:

- Felony
- Misdemeanor

Gender:

- Male
- Female

Risk Level:

- High
- Medium
- Low
- Limited

Which Treatment Provider(s) Will You Use Within this Program?

Provider Name	Treatment Type <small>(ie, Anger Management, Cognitive, DV, Dual Diagnosis, Sex Offender, Inpatient Substance Abuse, or Outpatient Substance Abuse_</small>	CPC Y/N?	If Yes, Overall Score
		<input type="checkbox"/> Yes <input type="checkbox"/> No	
		<input type="checkbox"/> Yes <input type="checkbox"/> No	
		<input type="checkbox"/> Yes <input type="checkbox"/> No	

Funding Sources

- State Grant-In-Aid Fund \$
- Inmate Welfare Release Subsidy Fund \$
- County General Fund \$
- Supervision Fees \$
- Other Fees \$ 19,540.00
- Other \$

Additional Comments:

Program Name:	<b>COGNITIVE PROGRAMS</b>
Program Category:	Other Programs
Program Description:	Moral Reconciliation Therapy (MRT) and Thinking For a Change (T4C) are cognitive classes offered to offenders to assist in interrupting criminal thinking patterns. The classes are offered in-house and facilitated by certified Community Corrections staff. Both MRT and T4C provide a systematic treatment system to enhance ego, social, moral, and positive behavioral growth in a progressive step by step method. The classes attempt to change how offenders make decisions and judgements by raising moral reasoning.
Program Objective(s):	Provide cognitive classes to all offenders referred by the Courts and supervising officers.
Method(s) of Evaluation:	Electronic audits of the CIS treatment module and staff consultations will be accomplished to determine if the program objectives are achieved. Data will be included in the Department's annual report.

Monthly Average to be Served: **20**

Type of Offender(s) Served:

- Probation
- Parole/Post-Prison
- Local Control

Crime Category:

- Felony
- Misdemeanor

Gender:

- Male
- Female

Risk Level:

- High
- Medium
- Low
- Limited

Which Treatment Provider(s) Will You Use Within this Program?

Provider Name	Treatment Type (ie, Anger Management, Cognitive, DV, Dual Diagnosis, Sex Offender, Inpatient Substance Abuse, or Outpatient Substance Abuse_	CPC Y/N?	If Yes, Overall Score
Moral Reconciliation Therapy	Cognitive	<input type="checkbox"/> Yes <input checked="" type="radio"/> No	
Thinking for a Change	Cognitive	<input type="checkbox"/> Yes <input checked="" type="radio"/> No	
		<input type="checkbox"/> Yes <input type="checkbox"/> No	

Funding Sources

- State Grant-In-Aid Fund \$
- Inmate Welfare Release Subsidy Fund \$
- County General Fund \$
- Supervision Fees \$
- Other Fees \$ 10,000.00
- Other \$

Additional Comments:

Program Name:	<b>ELECTRONIC MONITORING</b>
Program Category:	Community-Based Custodial Alternatives
Program Description:	The electronic monitoring program provides a sentencing, sanctioning, and furlough alternative to the Courts, Supervisory Authority, or supervising officers. The program allows the offender who is sentenced to a jail term to spend the time at home as an alternative to being physically confined to jail. Electronic monitoring enhances the supervision of offenders in need of a controlled environment and provides immediate responses to violations by requiring offenders to wear a transmitting device and placing a monitoring device in their residence for the duration of the sentence. Offenders on electronic monitoring are subject to 24/7 monitoring.
Program Objective(s):	Provide monitoring services to 100% of referred offenders. Provide completion reports to the sentencing authorities.
Method(s) of Evaluation:	The program will be evaluated through case audits. The custody units will be tracked and included in the Department's annual report.

Monthly Average to be Served: **2 - 4**

- Type of Offender(s) Served:
- Probation
  - Parole/Post-Prison
  - Local Control

- Crime Category:
- Felony
  - Misdemeanor

- Gender:
- Male
  - Female

- Risk Level:
- High
  - Medium
  - Low
  - Limited

Which Treatment Provider(s) Will You Use Within this Program?

Provider Name	Treatment Type (ie, Anger Management, Cognitive, DV, Dual Diagnosis, Sex Offender, Inpatient Substance Abuse, or Outpatient Substance Abuse_	CPC Y/N?	If Yes, Overall Score
		<input type="checkbox"/> Yes <input type="checkbox"/> No	
		<input type="checkbox"/> Yes <input type="checkbox"/> No	
		<input type="checkbox"/> Yes <input type="checkbox"/> No	

Funding Sources

- State Grant-In-Aid Fund \$
- Inmate Welfare Release Subsidy Fund \$
- County General Fund \$
- Supervision Fees \$
- Other Fees \$ 5,000.00
- Other \$

Additional Comments:

Columbia County  
2011-2012 Sanctions and Services

This report indicates the **monthly average** number of offenders that participate in the sanctions/services listed below; regardless of the funding source or how the sanction/service is paid for.

Custody

Corrections/Work Center  
Monthly Average: 10  
Funding Source: CCSO County General Fund

Electronic Home Detention  
Monthly Average: 2 - 4  
Funding Source: Client fees; Other Funds

Jail  
Monthly Average: 150  
1145 Monthly Average: 10  
Funding Source: County General Fund and Grant-In-Aid

Non-Custody

Community Service/Work Crew  
Monthly Average: 50 - 75  
Funding Source: Other Funds

Cognitive  
Monthly Average: 20  
Funding Source: Other Funds

Domestic Violence  
Monthly Average: 30  
Funding Source: Other Funds

Drug Court  
Monthly Average: 10 - 15  
Funding Source: Other Funds; CJC Grant; M-57

Mental Health Services  
Monthly Average: 10  
Funding Source: Other Funds

Sex Offender  
Monthly Average: 25 - 30  
Funding Source: Other Funds

**Transition Services/Subsidy**

**Monthly Average:** 20 - 30

**Funding Source:** Inmate Welfare Release Subsidy Fund; AIP Funding, M-57, Other Funds

**Substance Abuse - Outpatient & Residential**

**Monthly Average:** 45 (40 outpatient - 5 inpatient)

**Funding Source:** M-57; Other Funds

**Sanctions**

**Monthly Average:** 20 - 30

**Funding Source:** Other Funds

**Alcohol & Drug Evaluations**

**Monthly Average:** 15

**Funding Source:** Other Funds; Client Fees