

BEFORE THE BOARD OF COUNTY COMMISSIONERS  
FOR COLUMBIA COUNTY, OREGON

In the Matter of the Proposed Vacation )  
of a Portion of the Wilson Cutoff County )  
Road [aka Beaver Creek Road aka H.C. )  
Brinson Road] near Vernonia, Oregon )  
)  
)  
[Pihl and Meyer Petitions] \_\_\_\_\_ )

**ORDER NO. 95-01**  
(Supplementing Order No. 91-01)

WHEREAS, by Order No. 91-01 approved November 28, 2001, the Board of County Commissioners for Columbia County, Oregon, vacated a portion of the Wilson Cutoff County Road pursuant to petitions filed by Marvin O. and Ellen Meyer and Mike Pihl; and

WHEREAS, the county cartographer advises that the markings on the map attached to the report of the Public Works Director, which is affixed to Order No. 91-01 as Exhibit A, are misleading and may give the appearance of being in conflict with the legal description of the property vacated; and

WHEREAS, the map attached to this Order as Exhibit A is intended to clear up any such confusion;

NOW, THEREFORE, it is hereby ordered that:

1) The heavily-marked outline and slash marks on the map attached hereto as Exhibit A accurately reflects that portion of the Wilson Cutoff County Road which was vacated pursuant to Order No. 91-01;

2) This order shall be recorded with the County Clerk, without costs, a copy inserted in the appropriate road jacket and copies forwarded to the County Surveyor and the County Assessor.

DATED this 19th day of December, 2001.

BOARD OF COUNTY COMMISSIONERS  
FOR COLUMBIA COUNTY, OREGON

By: [Signature]  
Chair

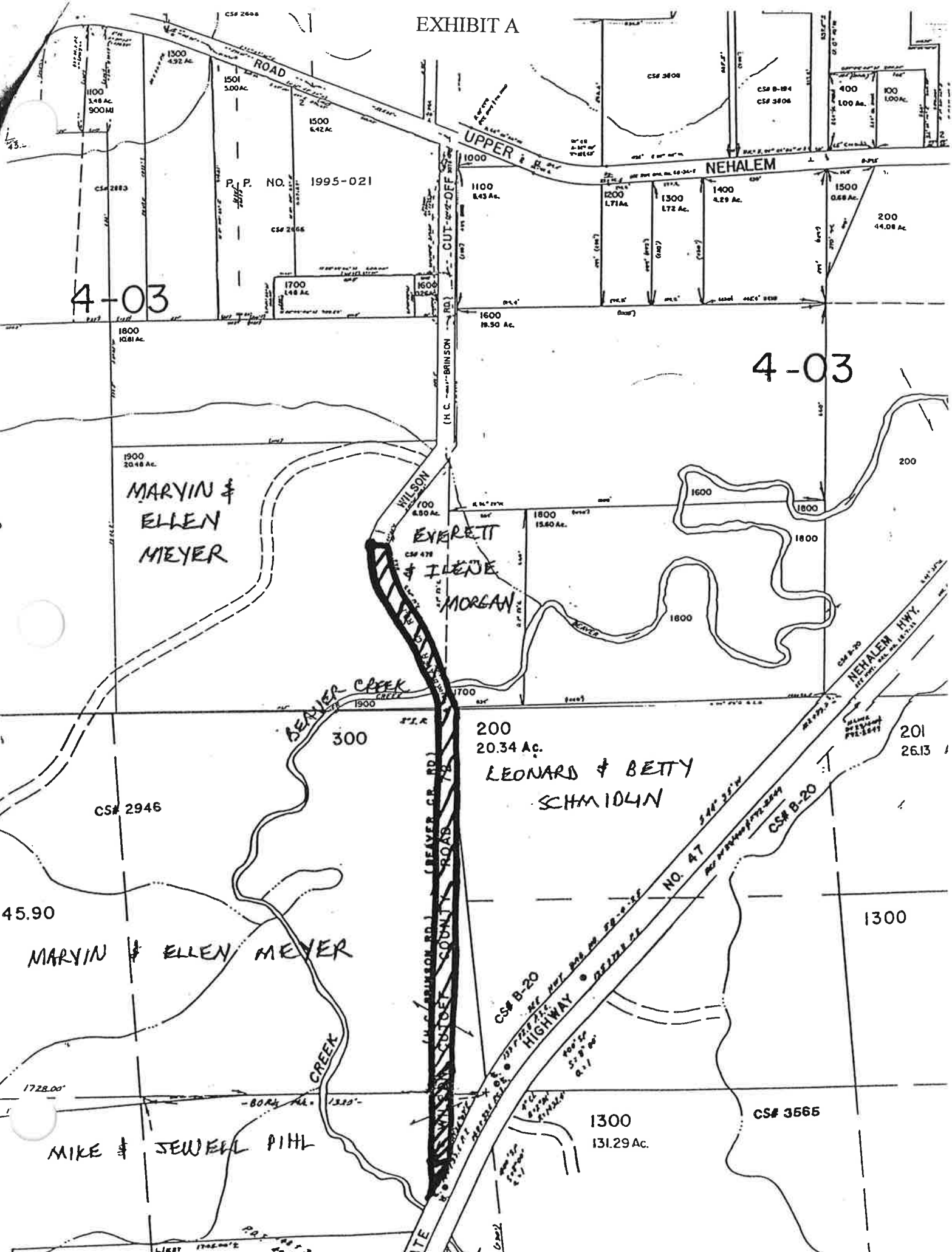
By: \_\_\_\_\_  
Commissioner

By: [Signature]  
Commissioner

APPROVED AS TO FORM:

By: [Signature]  
Office of County Counsel

EXHIBIT A



4-03

4-03

MARVIN &  
ELLEN  
MEYER

EVERETT  
& IRENE  
MORGAN

LEONARD & BETTY  
SCHMIDLIN

MARVIN & ELLEN MEYER

MIKE & SEWELL PIHL

P. P. NO. 1995-021

CS# 2946

CS# 3566

1300  
131.29 Ac.

200  
20.34 Ac.

45.90

201  
26.13

300

1300

1100  
8.43 Ac.

1900  
20.48 Ac.

1800  
10.81 Ac.

1600  
18.50 Ac.

1700  
8.80 Ac.

1800  
15.60 Ac.

1600

1800

1800

1800

200

200  
44.08 Ac.

400  
100 Ac.

100  
100 Ac.

CS# 2606

CS# 3808

CS# B-194  
CS# 3806

CS# 2883

CS# 2466

1700  
1.48 Ac.

1600  
12.26 Ac.

1200  
1.71 Ac.

1300  
1.72 Ac.

1400  
4.29 Ac.

1500  
0.88 Ac.

CS# 2946

CS# B-20

CS# B-20

CS# B-20

NO. 47

CS# B-20

CS# B-20

CS# B-20

CS# B-20

CS# B-20

CS# B-20

CS# B-20

CS# B-20

CS# B-20

CS# B-20

CS# B-20

CS# B-20

CS# B-20

CS# B-20

CS# B-20

CS# B-20

CS# B-20

CS# B-20

CS# B-20

CS# B-20

CS# B-20

CS# B-20

CS# B-20

WEST MOUNTAIN