

BEFORE THE BOARD OF COUNTY COMMISSIONERS
FOR COLUMBIA COUNTY, OREGON

In the Matter of Adopting the)
Columbia County Community)
Corrections 2001-2003 Biennial)
Plan)
_____)

RESOLUTION NO. 38-01

WHEREAS, the Director of Columbia County Community Corrections has presented the Columbia County Community Corrections 2001-2003 Biennial Plan to the Board of County Commissioners for their consideration and adoption; and

WHEREAS, the Columbia County Local Public Safety Coordinating Council has reviewed the Plan and recommends that it be adopted;

NOW, THEREFORE, IT IS HEREBY RESOLVED that the Columbia County Community Corrections 2001-2003 Biennial Plan be, and hereby is, adopted.

DATED at St. Helens, Oregon, this 2nd day of May, 2001.

BOARD OF COUNTY COMMISSIONERS
FOR COLUMBIA COUNTY, OREGON

By: 

Rita Bernhard, Chair

Approved as to form

By: 
Office of County Counsel

By: 

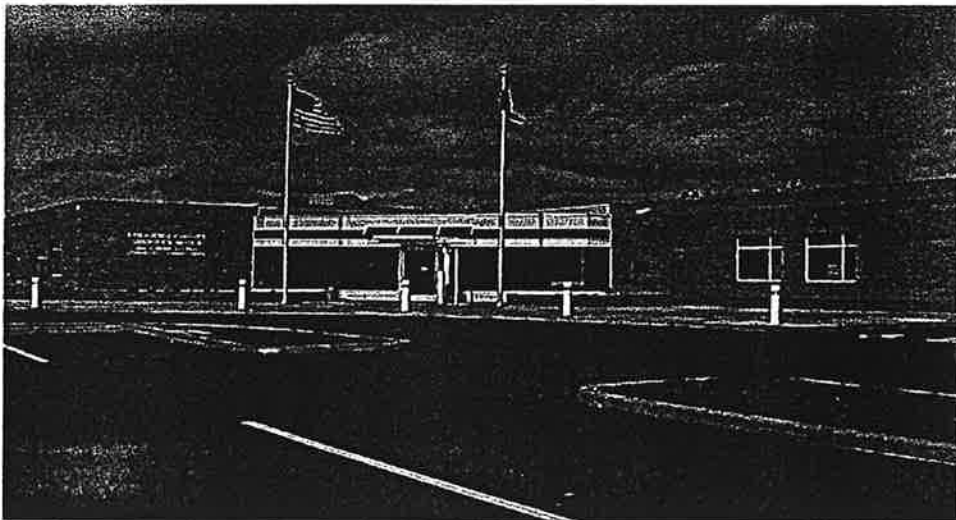
Anthony Hyde, Commissioner

By: 

Joe Corsiglia, Commissioner

RESOLUTION NO. 38-01

COLUMBIA COUNTY
COMMUNITY CORRECTIONS
JAIL
&
SHERIFF'S OFFICE



Biennial Plan

July 1, 2001 - June 30, 2003

COLUMBIA COUNTY COMMUNITY CORRECTIONS

PLAN FOR 2001-2003 BIENNIUM

Department of Corrections 2575 Center Street NE Salem, OR 97310	For Office Use Only Date and Time Received: _____
County: Columbia	Date: 05/15/01

Address: 901 Port Avenue
St. Helens, OR 97051
Telephone: (503) 397-6253
Fax: (503) 397-6645

Community Corrections Manager: Cliff Multanen
Address: 901 Port Avenue, St. Helens, OR 97051
Telephone: (503) 397-6253 Ext Fax: (503) 397-6645 E-Mail: multanc@co.columbia.or.us

Sheriff: Phil Derby
Address: 901 Port Avenue, St. Helens, OR 97051
Telephone: (503) 366-4602 Fax: (503) 397-4644 E-Mail: derbyp@co.columbia.or.us

Jail Manager: Jim Gibson
Address: 901 Port Avenue, St. Helens, OR 97051
Telephone: (503) 366-4602 Fax: (503) 366-4644 E-Mail: gibsonj@co.columbia.or.us

Supervisory Authority: Phil Derby
Address: 901 Port Avenue, St. Helens, OR 97051
Telephone: (503) 366-4602 Fax: (503) 366-4644 E-Mail: derbyp@co.columbia.or.us

LPSCC Contact: Steve Atchison
Address: Columbia County Courthouse, St. Helens, OR 97051
Telephone: (503)397-0300 Fax: (503) 397-2760 E-Mail: atchiss@co.columbia.or.us

BUDGET	
State Grant Funds:	\$2,257,379.00
County General Fund:	0.00
Supervision Fees:	180,000.00
Client Fees:	82,000.00
Other Funds:	0.00
Inmate Welfare Release Subsidy Funds:	5,925.00
TOTAL BUDGET:	\$2,525,304.00

TABLE OF CONTENTS

ADMINISTRATION

Resolution from Board of Commissioners 1
Transmitted letter from Local Public Safety Coordinating Council 2
Organizational Chart 3
LPSCC Membership Roster 4

BUDGET

Budget Summary 5

SUMMARY

Local Public Safety Coordinating Council 6
Community Corrections 6
Supervisory Authority 7
Columbia County Jail 7

COMMUNITY CORRECTIONS PROGRAMS

Administration 9
Parole & Probation Supervision 10
Substance Abuse Evaluation and Treatment 11
Domestic Violence 12
Sex Offender Evaluation and Treatment 13
Mental Health Services 14
Transition Services 15
Subsidy 16
Day Reporting 17
Community Service 18
Electronic Monitoring 19
Sanctions 20
DUII Evaluations 21

JAIL PROGRAMS

Administration 23
Columbia County Jail 24
Substance Abuse 25
Mental Health 26
Life Skills 27
Work Release 28
Work Crew 29

BEFORE THE BOARD OF COUNTY COMMISSIONERS
FOR COLUMBIA COUNTY, OREGON

In the Matter of Adopting the)
Columbia County Community) RESOLUTION NO.
Corrections 2001-2003 Biennial)
Plan)

WHEREAS, the Director of Columbia County Community Corrections has presented the Columbia County Community Corrections 2001-2003 Biennial Plan to the Board of County Commissioners for their consideration and adoption; and

WHEREAS, the Columbia County Local Public Safety Coordinating Council has reviewed the Plan and recommends that it be adopted.

NOW, THEREFORE, IT IS HEREBY RESOLVED that the Columbia County Community Corrections 2001-2003 Biennial Plan be, and hereby is, adopted.

Dated at St. Helens, Oregon this 2nd day of May 2001.

BOARD OF COUNTY COMMISSIONERS
FOR COLUMBIA COUNTY, OREGON

By: _____
Rita Bernhard, Chair

By: _____
Anthony Hyde, Commissioner

By: _____
Joe Corsiglia, Commissioner

Approved as to form

By: _____
Office of County Counsel

RESOLUTION NO.

**Columbia County
Local Public Safety Coordinating Council**

Columbia County Courthouse
St. Helens, OR 97051

April 30, 2001

Columbia County Board of Commissioners
Columbia County Courthouse
St. Helens, OR 97051

Oregon Department of Corrections
Community Services
2575 Center Street NE
Salem, OR 97301-4667

To the Board of Commissioners and the Department of Corrections:

On behalf of the Columbia County Local Public Safety Coordinating Council and Columbia County Community Corrections, we are pleased to present the plan for the period: July 1, 2001 to June 30, 2003. The Columbia County Local Public Safety Coordinating Council has reviewed the proposed Community Corrections plan and recommends to the Columbia County Board of Commissioners that the plan be adopted.

The document reflects traditional correction's programs in the County. We continue to prepare for the next biennial plan. Like many programs, the administration of corrections programs within the framework of local criminal justice is an evolving process.

Sincerely,



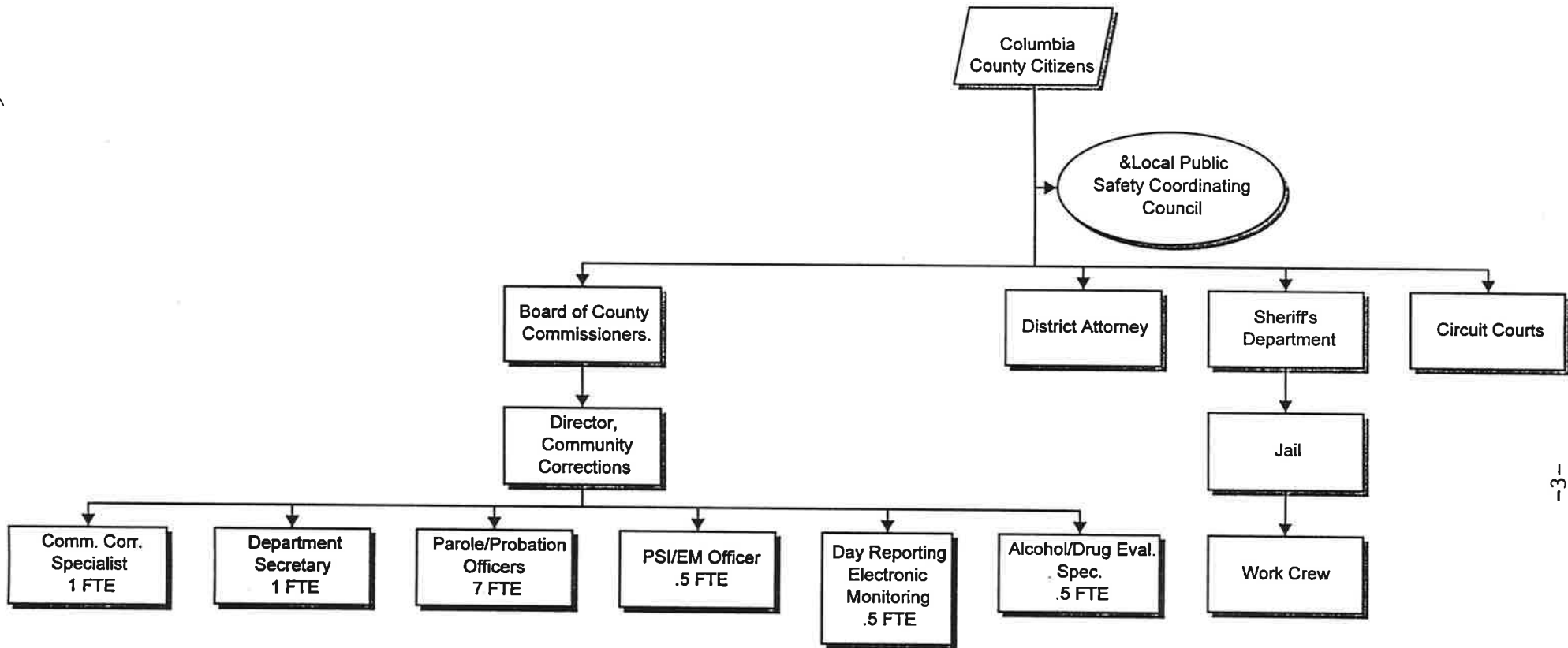
Steve Atchison, Chairman
Local Public Safety Coordinating Council

COLUMBIA COUNTY



OREGON

Organizational Chart



-3-

COLUMBIA COUNTY LOCAL PUBLIC SAFETY COORDINATING COUNCIL

Anthony Hyde, Commissioner
Columbia County Courthouse
St. Helens, OR 97051
(503) 397-4322
E-Mail: hydet@co.columbia.or.us

Sheriff Phil Derby
901 Port Avenue
St. Helens, OR 97051
(503) 366-4602
E-Mail: derbyp@co.columbia.or.us

Lt. Jim Gibson, Jail Manager
901 Port Avenue
St. Helens, OR 97051
(503) 366-4602
E-Mail: gibsonj@co.columbia.or.us

CHAIR
Steve Atchison, District Attorney
Columbia County Courthouse
St. Helens, OR 97051
(503) 397-0300 Ext 8303
E-Mail: atchiss@co.columbia.or.us

Judge Ted Grove
Columbia County Courthouse
St. Helens, OR 97051
(503) 397-2327 Ext 314

Judge Steven B. Reed
Columbia County Courthouse
St. Helens, OR 97051
(503) 397-2327 Ext 324

Judge Berkeley Smith
Columbia County Courthouse
St. Helens, OR 97051
(503) 397-2327 Ext 317

Cliff Multanen, Director Comm. Corr.
901 Port Avenue
St. Helens, OR 97051
(503) 366-4660
E-Mail: multanc@co.columbia.or.us

Barb Seatter
Columbia Community Mental Health
105 South 3rd Street
St. Helens, OR 97051
(503) 397-5211

Chief Mike Cocklin
St. Helens Police Department
150 South 13th Street
St. Helens, OR 97051
(503) 397-3333

Sgt. Mike Dingeman
Oregon State Police
PO Box 857
Scappoose, OR 97056
(503) 543-7036
E-Mail: pugs@columbia-center.org

VICE-CHAIR
Jan Kenna, Director
Commission on Children & Families
Columbia County Courthouse
St. Helens, OR 97051
(503) 397-7256 Ext 7225
E-Mail: kennaj@co.columbia.or.us

Stan Mendenhall, Director Juvenile Dept
Columbia County Courthouse
St. Helens, OR 97051
(503) 397-0275 Ext 8474
E-Mail: mendens@co.columbia.or.us

Bob Amela, Citizen
OYA - 1250 SE 19th St
Warrenton, OR 97146
(503) 861-7190 Ext 226
E-Mail: bob.amela@oya.state.or.us

Bob Schmor, City Representative
PO Box 158
Columbia City, OR 97018
(503) 397-2599

Janice Faltersack, Director Victims Assistance
Columbia County Courthouse
St. Helens, OR 97051
(503) 366-3914 Ext 3914
E-Mail: falterj@co.columbia.or.us

LPSCC SUPPORT

Linda Hald
901 Port Avenue
St. Helens, OR 97051
(503) 366-4661
E-Mail: haldl@co.columbia.or.us

Butch Chapin, Citizen
474 North 6th Street
St. Helens, OR 97051
(503) 366-3209
E-Mail: bchapin@columbia-center.org

Jenefer Grant, Defense Attorney
280 South First Street
St. Helens, OR 97051
(503) 366-1219

COLUMBIA COUNTY COMMUNITY CORRECTION BUDGET SUMMARY
2001-2003 BIENNIUM
COMMUNITY CORRECTIONS STATE GRANT FUNDS

PROGRAM NAME	STATE GRANT FUNDS	INMATE WELFARE RELEASE SUBSIDY FUNDS	TOTAL
Parole/Probation supervision	\$937,033.00		\$937,033.00
Administration	\$219,115.00		\$219,115.00
Substance Abuse Evaluation/Treatment	\$100,000.00		\$100,000.00
Domestic Violence	\$20,000.00		\$20,000.00
Day Reporting	\$30,000.00		\$30,000.00
Sex Offender Evaluation/Treatment	\$30,000.00		\$30,000.00
Subsidy	\$34,075.00	\$5,925.00	\$40,000.00
Community Service	\$55,000.00		\$55,000.00
Electronic Monitoring	\$40,000.00		\$40,000.00
Transition Services	\$0.00		\$0.00
Mental Health Services	\$0.00		\$0.00
DUII Evaluations	\$0.00		\$0.00
Sanctions	\$0.00		\$0.00
Jail Administration	\$254,744.00		\$254,744.00
Jail	\$311,491.00		\$311,491.00
Inmate Programs	\$195,921.00		\$195,921.00
Inmate Treatment Services	\$30,000.00		\$30,000.00
FUND TOTAL	\$2,257,379.00	\$5,925.00	\$2,263,304.00

Check One:

- Budget summary is based on the Governor's Revised Budget and both County and State may experience changes that affect the final grand total.
- Budget summary is based on the legislatively Approved Budget (LAPB)

LOCAL PUBLIC SAFETY COORDINATING COUNCIL

MISSION STATEMENT: "To promote public safety by developing policies and procedures that create an effective criminal and juvenile justice system including managing the offender population through prevention, intervention and accountability."

In February 2001, the new jail was opened. Community Corrections and the Sheriff's Office also moved to the facility. Construction of the jail was completed as scheduled and on budget. Funding the operations of the new facility is an ongoing concern for LPSCC. This issue will be a primary focus for the council. LPSCC will continue to work toward coordination of all criminal justice services within the county.

Columbia County's LPSCC will continue to work toward attaining the goals stated in the mission statement. A Domestic Violence Council has been active in the county. Several of the LPSCC members are members of the council. LPSCC supported the application for a domestic grant that was awarded to the county. The grant has funded a domestic violence team. The grant has been extended to July 31, 2001 and the Sheriff's department is applying for a 18-month continuance of the grant.

COLUMBIA COUNTY COMMUNITY CORRECTIONS

MISSION STATEMENT: "Reduce criminal conduct through a partnership with communities, human services agencies, and with a continuum of supervision, incarceration, and programming to manage offender behavior."

The Community Corrections staff consists of a Director, four county-funded Parole & Probation Officers, one grant-funded Parole & Probation Officer, one part-time pre-trial release officer, one Corrections Specialist, one Clerical Specialist, one Office Specialist, and one part-time Alcohol & Drug Evaluation Specialist. The estimated increase in state funding will allow the department to add two Parole & Probation Officers. One position will supervise a general caseload and assist the sex offender Officer. It is planned that the other position will supervise the Community Service Program and compact cases. This position will also be involved in offender programs.

Parole & Probation Officers that supervise offenders outside of the St. Helens area are meeting offenders at local police departments. Remote access is available so the officers are able to connect to the CIS system when they are out of the office. Columbia County is one of several Community Corrections agencies that are participating in a pilot project involving other human services agencies to focus on early childhood intervention. Columbia County has been networking with other agencies by being involved in the Human Services Coalition and attending youth service team meetings at the local schools. Community Corrections and Adult and Family Services periodically hold joint staff meetings. It is possible that the department may reorganize the caseloads to develop a specialized caseload of offenders involved with other human services agencies.

The total caseload has increased from 475 in April 1999 to 537 in March 2001. Approximately 407 (76%) are funded felony cases. In addition, the department is supervising 38 conditional release cases.

SUPERVISORY AUTHORITY

The Columbia County Supervisory Authority is Sheriff Phil Derby. The Sheriff appointed an advisory board that consists of the Director of Community Corrections, a Jail staff, and a citizen. The board meets periodically to review inmate files that have requested furloughs. The board either approves or denies the request. The Supervisory Authority has delegated most of the duties to the board or Community Corrections. The board is staffed with a Community Corrections employee. Although all SB 1145 movement is entered into CIS, Community Corrections has been tracking custody units served by the offenders.

COLUMBIA COUNTY JAIL

The present Columbia County Jail was opened and began operation on February 7, 2001. The jail has a total of 195 beds, 159 regular jail beds and 36 work release beds. The population has averaged about 105 inmates, with the majority being felony (approximately 60%) medium custody classification and the remainder being misdemeanor offenders. Most Local Control offenders are required to serve 80% of their sentence prior to being furloughed to alternative programming. The jail is beginning in-house treatment programs as outlined in the program description section of this plan. The jail also provides mental health evaluations, treatment, and medication monitoring for the increased population. Although designed to limit the number of staff to operate it, the new jail has increased the need for staff to operate it in a safe manner.

**COMMUNITY CORRECTIONS
PROGRAMS**

COUNTY: Columbia

PROGRAM NAME: Administration

CONTACT PERSON: Cliff Multanen

TELEPHONE: 503-366-4660

FAX: 503-397-6645

E-Mail: multanc@co.columbia.or.us

PROGRAM ADDRESS: 901 Port Avenue
St. Helens, OR 97051

PROGRAM PURPOSE: To provide management and administrative services for the department.

PROGRAM DESCRIPTION: The Department Director provides management services for the Department. These services include but are not limited to the following: Development of the department budget. Facilitates the development of plans and goals and ensures that they are communicated to staff. Conducts regular, formal and informal evaluations of department employees. Discharges all supervisory responsibilities in accordance with the County's policies and procedures, collective bargaining agreements, and State and Federal laws.

The Office Manager keeps time records and provides assistance in developing the department budget. The manager also provides limited supervision of department support staff. The County provides payroll, Human Resources services and office space.

Check all that apply:

- Probationers high medium low limited
 Parolees/PPS high medium low limited
 Local Control Offenders
 Other Offender Type(s):

- Men Women Both
 Residential Non-residential Both

Total Number of Offenders to Served During the Biennium:

Number of Offenders Who Can be Actively Involved at Any One Time:

Program Uses State Grant Funds: Yes

COUNTY: Columbia

PROGRAM NAME: Parole & Probation Supervision

CONTACT PERSON: Cliff Multanen

TELEPHONE: 503-366-4660

FAX: 503-397-6645

E-Mail: multanc@co.columbia.or.us

PROGRAM ADDRESS: 901 Port Avenue
St. Helens, OR 97051

PROGRAM PURPOSE: To supervise offenders on parole, post prison supervision and probation. To provide presentence investigation reports and other investigative services to releasing authorities.

PROGRAM DESCRIPTION: Officers supervise offenders on parole, post prison supervision and probation. Presentence investigations are completed as ordered by the court. Sentencing recommendations are made within the sentencing guidelines and within the local community corrections scope of resources. The program assists the offender in solving problems leading to criminal behavior and thereby reducing the probability of the offender returning to criminal behavior. The officers monitor behavior and compliance to supervision conditions through the utilization of the contact standards of the Oregon Case Management System, (OCMS). Violations of supervision conditions are reported by administrative (structured) sanctions or violation reports submitted to the releasing authority. Supervising officers make referrals to community agencies: employment services, mental health treatment, substance abuse treatment, sex offender treatment, parenting classes, cognitive, life skills and domestic treatment to assist the offender in avoiding further criminal behavior.

The department is presently involved in a State sponsored pilot project with other State, County and local human services agencies in the county focusing on early childhood intervention. Officers are being trained on observation and interviewing skills. While there is a need for closer collaboration and communications between Social Services and Community Corrections, the department has increased partnering with other agencies. However, this project should enhance the case management collaboration.

The department supervises a limited number of pre trial cases and offenders on electronic monitoring. The department also tracks the number of SB 1145 offenders in jail.

Check all that apply:

(X) Probationers (X) high (X) medium (X) low (X) limited

(X) Parolees/PPS (X) high (X) medium (X) low (X) limited

(X) Local Control Offenders

(X) Other Offender Type(s): Misdemeanors

() Men () Women (X) Both

() Residential () Non-residential (X) Both

Total Number of Offenders to be Served During the Biennium: 750

Number of Offenders Who can be Actively Involved at Any One Time: 575

Program Uses State Grant Funds: Yes

COUNTY: Columbia

PROGRAM NAME: Substance Abuse Evaluation and Treatment

CONTACT PERSON: Cliff Multanen **TELEPHONE:** 503-366-4660
FAX: 503-397-6645
E-Mail: multanc@co.columbia.or.us

PROGRAM ADDRESS: 901 Port Ave.
St. Helens, OR 97051

PROGRAM PURPOSE: To provide substance abuse evaluation and treatment for offenders who are ordered by the releasing authority or supervising Parole & Probation officer.

PROGRAM DESCRIPTION: A comprehensive program that provides evaluations and referrals to treatment resources that provide intensive out patient and residential treatment programs. The programs include transition programming for offenders waiting for group or residential treatment. It provides aftercare for offenders who have completed outpatient and residential treatment. The program provides intensive outpatient and residential substance abuse treatment to offenders whose criminal behavior is directly linked to substance abuse. The objective is to reduce or eliminate alcohol and/or drug use, establish linkages to aftercare treatment, and reduce involvement in criminal activity. The program provides individual and group counseling, education, recreational therapy, 12-step support, cognitive programming, and anger management. The program uses urinalyses to monitor drug use. The program is also available for local control offenders that are serving a sentence in jail. Inmates that are allowed by the Judge and approved by the Supervisory Authority are furloughed to residential treatment programs after serving a portion of their sentence. Columbia Community Mental Health is the primary provider of outpatient and residential treatment.

Offenders are expected to pay for their treatment. Those that are not eligible for OHP or do not have other resources, are assisted by the department. Offenders that have received this assistance are encouraged to repay the department.

Check all that apply:

Probationers high medium low limited
 Parolees/PPS high medium low limited
 Local Control Offenders
 Other Offender Type(s): Misdemeanors

Men Women Both
 Residential Non-residential Both

Total Number of Offenders to be Served During the Biennium: 300

Number of Offenders Who Can be Actively Involved at Any One Time: 30

Program Uses State Grant Funds: Yes

COUNTY: Columbia

PROGRAM NAME: Domestic Violence

CONTACT PERSON: Cliff Multanen **TELEPHONE:** 503-366-4660
FAX: 503-397-6645
E-Mail: multanc@co.columbia.or.us

PROGRAM ADDRESS: 901 Port Ave.
St. Helens, OR 97051

PROGRAM PURPOSE: To evaluate and provide treatment for offenders who have been convicted of, or display assaultive behavior.

PROGRAM DESCRIPTION: A comprehensive program to evaluate offenders who have been convicted of or display assaultive behavior, make appropriate referrals to treatment resources, and provide an intensive treatment program for offenders. The 36-week program consists of education and treatment to prevent domestic violence. It includes individual and group therapy sessions designed to stop family violence and teach offenders of the extensive harm of their behavior to their family and others. Develop coping skills to change their unacceptable behavior and to understand and manage anger and behavior without violence. Correctional Counseling Services Inc. and Columbia Community Mental Health are the primary treatment providers. The evaluation process utilizes the S.A.R.A. instrument. The supervising officer is a member of the Family Violence Supervision Network and attends the quarterly meetings.

The domestic violence program has been funded through a grant. Felony and misdemeanor cases are supervised in a specialized domestic violence caseload. A grant continuance has been submitted. Offenders are expected to pay for the treatment program. The department will assist offenders that are unable to pay for the treatment. However, they are encouraged to reimburse the department.

Check all that apply:

Probationers high medium low limited

Parolees/PPS high medium low limited

Local Control Offenders

Other Offender Types (s): Misdemeanors

Men Women Both

Residential Non-residential Both

Total Number of Offenders to be Served During the Biennium: 100

Number of Offenders Who Can be Actively Involved at Any One Time: 55

Program Uses State Grant Funds: Yes

COUNTY: Columbia

PROGRAM NAME: Sex Offender Evaluation & Treatment

CONTACT PERSON: Cliff Multanen **TELEPHONE:** 503-366-4660
FAX: 503-397-6645
E-Mail: multanc@co.columbia.or.us

PROGRAM ADDRESS: 901 Port Ave.
St. Helens, OR 97051

PROGRAM PURPOSE: To provide sex offender treatment to offenders convicted of sexual offenses with a mandatory treatment ordered by the releasing authority.

PROGRAM DESCRIPTION: The supervising officer of the sex offender caseload refers offenders to treatment programs for evaluations. The program therapist establishes an appropriate treatment plan in consultation with the supervising officer. All of the treatment programs use plethysmograph and polygraph testing. Maintenance polygraphs are scheduled for offenders that have completed treatment. Treatment includes individual and group sessions to address victim empathy, victim clarification, cognitive errors, deviant arousal cycle, intervention plans, relapse prevention, anger, family reintegration, and social skills. Several treatment programs are used in the Portland/Metro area, Longview WA, and St. Helens.

Offenders are expected to pay for their treatment. Offenders that are unable to pay are assisted by the department. However, they are encouraged to reimburse these payments.

Check all that apply:

Probationers high medium low limited
 Parolees/PPS high medium low limited
 Local Control Offenders
 Other Offender Type(s): Misdemeanor

Men Women Both
 Residential Non-residential Both

Total Number of Offenders to be Served During the Biennium: 120

Number of Offenders Who Can be Actively Involved at Any One Time: 50

Program Uses State Grant Funds: Yes

COUNTY: Columbia

PROGRAM NAME: Mental Health Services

CONTACT PERSON: Cliff Multanen

TELEPHONE: 503-366-4660

FAX: 503-397-6645

E-Mail: multanc@co.columbia.or.us

PROGRAM ADDRESS: 901 Port Ave.
St. Helens, OR 97051

PROGRAM PURPOSE: To provide mental health services to offenders who have been ordered by the releasing authority to enter and complete a mental health program, or who exhibit the need for evaluation and/or treatment.

PROGRAM DESCRIPTION: Supervising Officers schedule psychological evaluations to determine if the offender is in need of mental health services. The officers will arrange for resources if services are recommended. Columbia Community Mental Health is the primary provider for these services. These services are available in the jail if necessary.

Check all that apply:

Probationers high medium low limited risk

Parolees high medium low limited risk

Local Control Offenders

Other Offender Type(s):

Men Women Both

Residential Non-residential Both

Total Number of Offenders to Served During the Biennium:

Number of Offenders Who Can be Actively Involved at Any One Time:

Program Uses State Grant Funds: No

COUNTY: Columbia

PROGRAM NAME: Transition Services

CONTACT PERSON: Cliff Multanen **TELEPHONE:** 503-366-4660
FAX: 503-397-6645
E-Mail: multanc@co.columbia.or.us

PROGRAM ADDRESS: 901 Port Ave.
St. Helens, OR 97051

PROGRAM PURPOSE: To provide assistance to offenders that are being released from Department of Corrections facilities and County Jails.

PROGRAM DESCRIPTION: The supervising officer reviews release plans to determine if the offender will need assistance with their transition from custody to the community. Communication with the Institution Release Officer and/or offender is accomplished if there is a need and time allows. The supervising officer contacts the offenders community support structure to determine if additional services are necessary. Whenever possible, community resources are arranged prior to the offenders release. Subsidy housing is available on a limited basis through a local hotel and drug and alcohol free housing sponsored by the local recovering community. An Oxford House is also available. Offenders that receive these funds are encouraged to reimburse the funds to provide additional assistance to others. 156 offenders are monitored throughout their sentence. They are encouraged to take advantage of any appropriate programming that is offered in the jail.

At this time, Columbia County Jail has available beds. ODOC has been contacted regarding transferring Columbia County offenders to the jail prior to their release for increased transition planning.

Check all that apply:

- Probationers high medium low limited risk
 Parolees high medium low limited risk
 Local Control Offenders
 Other Offender Type (s):

- Men Women Both
 Residential Non-residential Both

Total Number of Offenders to Served During the Biennium: Depends on the number of offenders being released. All offenders receive services. However, monetary assistance is limited to the budgeted subsidy funds.

Number of Offenders Who Can be Actively Involved at Any One Time: Limited to the number of offenders being released.

Program Uses State Grant Funds: Yes

COUNTY: Columbia

PROGRAM NAME: Subsidy

CONTACT PERSON: Cliff Multanen

TELEPHONE: 503-366-4660

FAX: 503-397-6645

E-Mail: multanc@co.columbia.or.us

PROGRAM ADDRESS: 901 Port Avenue
St. Helens, OR 97051

PROGRAM PURPOSE: Provide emergency funds to offenders.

PROGRAM DESCRIPTION: Provides for housing, medical care, clothing, treatment and other emergency funds to offenders identified as needing assistance. Supervising officers assess the offenders needs and provide the appropriate funds, limited to available resources. Offenders are encouraged to reimburse the funds so they can be used in a revolving subsidy fund.

Emergency housing is available through local commercial establishments and alcohol/drug free residences sponsored by the local recovering community.

Check all that apply:

Probationers high medium low limited
 Parolees/PPS high medium low limited
 Local Control Offenders
 Other Offender Type(s): Misdemeanors

Men Women Both
 Residential Non-residential Both

Total Number of Offenders to be Served During the Biennium: 200

Number of Offenders Who Can be Actively Involved at Any One Time:

Program Uses State Grant Funds: Yes

COUNTY: Columbia

PROGRAM NAME: Day Reporting

CONTACT PERSON: Cliff Multanen

TELEPHONE: 503-366-4660

FAX: 503-397-6645

E-Mail: multanc@co.columbia.or.us

PROGRAM ADDRESS: 901 Port Ave.
St. Helens, OR 97051

PROGRAM PURPOSE: To provide increased supervision, cognitive and life skills training, and employment assistance for offenders that demonstrate a need.

PROGRAM DESCRIPTION: This program provides increased supervision up to daily reporting. The program is utilized as a case management tool or as a sanction for violations of conditions of supervision. Cognitive and life skills are provided to referred offenders and their significant others. Breaking Barriers is the primary program provided.

Unemployed offenders are assessed by the supervising officer to determine employability. Appropriate offenders are placed on job search status and required to submit a verifiable job search list. Offenders that do not find employment may be referred to the Job Club program sponsored by Adult and Family Services and the Management Training Corporation. The 2-5 week long program provides employment workshops, life skills training, cognitive classes, and job search. Qualified offenders may receive additional specific job training and GED preparation. Other unemployed offenders are referred to the Oregon State Employment Division for services.

Check all that apply:

Probationers high medium low limited

Parolees/PPS high medium low limited

Local Control Offenders

Other Offender Type(s): Misdemeanors

Men Women Both

Residential Non-residential Both

Total Number of Offenders to be Served During the Biennium: 250

Number of Offenders Who Can be Actively Involved at Any One Time: 20

Program Uses State Grant Funds: Yes

COUNTY: Columbia

PROGRAM NAME: Community Service

CONTACT PERSON: Cliff Multanen

TELEPHONE: 503-366-4660

FAX: 503-397-6645

E-Mail: multanc@co.columbia.or.us

PROGRAM ADDRESS: 901 Port Avenue
St. Helens, OR 97051

PROGRAM PURPOSE: To provide a cost-effective sentencing alternative to releasing authorities by placing and monitoring offenders with approved public or private nonprofit agencies. To provide an additional sanctioning tool for offenders who have violated terms of their supervision.

PROGRAM DESCRIPTION: Offenders are ordered to complete community service work as part of their supervision sentence or as a sanction in response to a violation of supervision conditions. The program allows the offender to meet obligations and make restitution through service to the community. The offender pays a fee during the intake process and is then referred to one of several agencies that participate in the program. The program coordinator tracks the offenders progress and reports the offenders completion of the program to the releasing authority or supervising officer. The coordinator has periodic contact with participating agencies.

Check all that apply:

Probationers high medium low limited

Parolees/PPS high medium low limited

Local Control Offenders

Other Offender Type (s): Misdemeanors

Men Women Both

Residential Non-residential Both

Total Number of Offenders to be Served During the Biennium: 350

Number of Offenders Who Can be Actively Involved at Any One Time: 45

Program Uses State Grant Funds: Yes

COUNTY: Columbia

PROGRAM NAME: **Electronic Monitoring Program
(Community-Based Custodial Alternative)**

CONTACT PERSON: Cliff Multanen **TELEPHONE:** (503) 397-6253
FAX: (503) 397-6645
E-Mail: multanc@co.columbia.or.us

PROGRAM ADDRESS: 901 Port Ave.
St. Helens, OR 97051

PROGRAM PURPOSE: To provide some sentencing alternatives for the Courts. To provide a sanctioning alternative for violations of supervision conditions. To provide an alternative furlough program for inmates.

PROGRAM DESCRIPTION: Offenders are sentenced by the court to electronic monitoring. Offenders that are allowed by the Judge and approved by the Supervisory Authority may be furloughed to electronic monitoring after serving a portion of their sentence. This enables the offenders to seek and maintain employment and participate in treatment. Electronic Monitoring is also used as a sanction for violations of supervision conditions. Conditional Released individuals may also be ordered by the Court to be on electronic monitoring as a condition of their release. At the present time the program has 20 units. Participants on the program are assessed a daily fee.

The monitoring service is provided by BI Incorporated. Alerts are faxed to Community Corrections and the Jail. Community Corrections Staff responds to the alert during the normal working hours. Jail staff and Sheriff's Deputies respond during the other hours.

Check all that apply:

Probationers high medium low limited
 Parolees/PPS high medium low limited
 Local Control Offenders
 Other Offender Type (s): Misdemeanors; Conditional Release

Men Women Both
 Residential Non-residential Both

Total Number of Offenders to be Served During the Biennium: 200

Number of Offenders Who Can be Actively Involved at Any One Time: 20

Program Uses State Grant Funds: Yes

COUNTY: Columbia

PROGRAM NAME: Sanctions

CONTACT PERSON: Cliff Multanen

TELEPHONE: 503-366-4660

FAX: 503-397-6645

E-Mail: multanc@co.columbia.or.us

PROGRAM ADDRESS: 901 Port Ave.
St. Helens, OR 97051

PROGRAM PURPOSE: To respond to violations of conditions of supervision in order to provide an immediate consequence for the behavior.

PROGRAM DESCRIPTION: Supervising Officers investigate alleged violations of supervision. Upon determination that a violation occurred and that it will be appropriately responded to by sanctioning the offender, the supervising officer will proceed with the sanctioning process per Department of Corrections policy. Sanctions include but are not limited to: Jail, work release, work crew, community service, day reporting, and job club.

Check all that apply:

Probationers high medium low limited risk

Parolees high medium low limited risk

Local Control Offenders

Other Offender Type(s):

Men Women Both

Residential Non-residential Both

Total Number of Offenders to Served During the Biennium: As needed

Number of Offenders Who Can be Actively Involved at Any One Time: As needed

Program Uses Stat Grant Funds: Yes

COUNTY: Columbia

PROGRAM NAME: DUII Evaluations

CONTACT PERSON: Leslie Ramsdell

TELEPHONE: 503-366-4668

FAX: 503-397-6645

E-Mail: ramsdel@co.columbia.or.us

PROGRAM ADDRESS: 901 Port Ave.
St. Helens, OR 97051

PROGRAM PURPOSE: Provide alcohol and marijuana evaluations and monitor compliance of offenders referred by Courts and determines appropriate level of treatment.

PROGRAM DESCRIPTION: Individuals who come before the Court on DUII Diversion, Possession of Less than an Ounce of Marijuana, Boating Under the Influence, or DUII Conviction offenses are required to receive an alcohol and drug assessment and participate in alcohol/drug education and treatment. The DUII evaluator completes the assessment, makes recommendations, monitors compliance, and reports progress and completion to the District Attorney and Courts. Courts occasionally order probation cases to complete this evaluation.

Check all that apply:

Probationers high medium low limited risk
 Parolees high medium low limited risk
 Local Control Offenders
 Other Offender Type(s): All individuals ordered by the Court.

Men Women Both
 Residential Non-residential Both

Total Number of Offenders to Served During the Biennium: 500

Number of Offenders Who Can be Actively Involved at Any One Time: 250

Program Uses State Grant Funds: No

**JAIL
PROGRAMS**

COUNTY: Columbia

PROGRAM NAME: Administration

CONTACT PERSON: Lt. Jim Gibson

TELEPHONE: 503-366-4602

FAX: 503-366-4644

E-Mail: gibsonJ@co.columbia.or.us

PROGRAM ADDRESS: 901 Port Ave.
St. Helens, OR 97051

PROGRAM PURPOSE: To provide management and administrative services for the jail.

PROGRAM DESCRIPTION: The jail manager provides management services for the facility. These services include but are not limited to the following: Development of the department budget, conducts regular, formal and informal evaluations of department employees and maintains department training records. Discharges all supervisory responsibilities in accordance with the Sheriffs policies and procedures, collective bargaining agreements, and State and Federal laws.

The Jail Sergeants provide supervision of the facility staff, maintain employee work schedules, submit payroll documentation and facilitates facility inspections. The Sergeants also ensure that the facility is operated in accordance with State and Federal laws.

Check all that apply:

- Probationers high medium low limited risk
 Parolees high medium low limited risk
 Local Control Offenders
 Other Offender Type(s):

- Men Women Both
 Residential Non-residential Both

Total Number of Offenders to Served During the Biennium:

Number of Offenders Who Can be Actively Involved at Any One Time:

Program Uses State Grant Funds: Yes

COUNTY: Columbia
PROGRAM NAME: Columbia County Jail
CONTACT PERSON: Lt. Jim Gibson **TELEPHONE:** 503-366-4602
FAX: 503 -366-4644
E-Mail: gibsonJ@co.columbia.or.us
PROGRAM ADDRESS: 901 Port Ave.
St. Helens, OR 97051

PROGRAM PURPOSE: To provide custody for offenders that have been sentenced by the releasing authority or for those that have demonstrated an unwillingness or inability to comply with the conditions of supervision. To provide custody for individuals that are ordered to be in custody awaiting trial.

PROGRAM DESCRIPTION: The current jail opened in February 2001. The facility is designed to house 195 inmates including 24 inmate workers and 36 work release inmates. The average population to date has been 105 inmates. New inmates are held in classification for up to 72 hours. Once classified they are transferred to the appropriate living area. The jail was designed with a control center with line of site to all of the holding areas, with the exception of the inmate worker dorm which has cameras. The work release area is visible from the booking area. The jail has a library and a program area that are available for life skills training. The jail's program manager is currently in the process of planning the various programs that will be available for the inmates. Cognitive programming, substance abuse evaluation and treatment, parenting and literacy training, and vocational training are planned for the facility.

Check all that apply:

Probationers high medium low limited risk
 Parolees high medium low limited risk
 Local Control Offenders
 Other Offender Type(s): misdemeanor, pretrial, INS

Men Women Both
 Residential Non-residential Both

Total Number of Offenders to Served During the Biennium: varies

Number of Offenders Who Can be Actively Involved at Any One Time: 195

Program Uses State Grant Funds: Yes

COUNTY: Columbia

PROGRAM NAME: Substance Abuse

CONTACT PERSON: Lt. Jim Gibson

TELEPHONE: (503) 397-6253

FAX: (503) 397-6645

E-Mail: gibsonj@co.columbia.or.us

PROGRAM ADDRESS: 901 Port Ave.
St. Helens, OR 97051

PROGRAM PURPOSE: To provide substance abuse assessment and treatment for offenders that are ordered by the court or releasing authority to be involved in substance abuse treatment. To provide assessment and treatment for offenders that desire to be involved in treatment while incarcerated.

PROGRAM DESCRIPTION: At the present time, the jail utilizes NA/AA volunteers to provide substance abuse treatment. The program will be expanded, dependent on resources, to provide a comprehensive program that includes evaluation and treatment. The programs objective is to determine inmates that are in need of substance abuse treatment, to start the treatment process, and to facilitate continued treatment upon release from custody.

Check all that apply:

Probationers high medium low limited risk

Parolees high medium low limited risk

Local Control Offenders

Other Offender Type(s): misdemeanors

Men Women Both

Residential Non-residential Both

Total Number of Offenders to Served During the Biennium: 800

Number of Offenders Who Can be Actively Involved at Any One Time: 20

Program Uses State Grant Funds: yes

COUNTY: Columbia

PROGRAM NAME: Mental Health

CONTACT PERSON: Lt. Jim Gibson

TELEPHONE: 503-366-4602

FAX: 503-366-4644

E-Mail: gibsonj@co.columbia.or.us

PROGRAM ADDRESS: 901 Port Ave.
St. Helens, OR 97051

PROGRAM PURPOSE: To provide emergency crisis mental health services for incarcerated inmates.

PROGRAM DESCRIPTION: Inmates with a history of mental health problems or those that exhibit the need for mental health services are assessed and provided treatment. Columbia Community Mental Health is the provider for these services.

Check all that apply:

Probationers high medium low limited risk

Parolees high medium low limited risk

Local Control Offenders

Other Offender Type(s): misdemeanor, pre-trial

Men Women Both

Residential Non-residential Both

Total Number of Offenders to Served During the Biennium: As needed

Number of Offenders Who Can be Actively Involved at Any One Time: As needed

Program Uses State Grant Funds: Yes

COUNTY: Columbia

PROGRAM NAME: Life skills

CONTACT PERSON: Lt. Jim Gibson

TELEPHONE: 503-366-4602

FAX: 503-366-4644

E-Mail: gibsonj@co.columbia.or.us

PROGRAM ADDRESS: 901 Port Ave.
St. Helens, OR 97051

PROGRAM PURPOSE: To provide cognitive, life skills, and vocational training for inmates

PROGRAM DESCRIPTION: This program is in the developmental stage. The program will be developed to provide the following: Cognitive training (Breaking Barriers), vocational training which will include custodial, culinary, and laundry and beginning computer skills. The program manager is also partnering with outside agencies to provide parenting and literacy programs for targeted inmates.

Check all that apply:

Probationers high medium low limited risk

Parolees high medium low limited risk

Local Control Offenders

Other Offender Type(s): misdemeanors

Men Women Both

Residential Non-residential Both

Total Number of Offenders to Served During the Biennium: 300

Number of Offenders Who Can be Actively Involved at Any One Time: 10

Program Uses State Grant Funds: Yes

COUNTY: Columbia

PROGRAM NAME: Work Release

CONTACT PERSON: Lt. Jim Gibson

TELEPHONE: 503-366-4602

FAX: 503-366-4644

E-Mail: gibson@c.columbia.or.us

PROGRAM ADDRESS: 901 Port Ave.
St. Helens, OR 97051

PROGRAM PURPOSE: To provide an alternative custody program to allow an employed offender to maintain his employment. To allow inmates that have completed the required in custody programming, to seek employment prior to their release.

PROGRAM DESCRIPTION: The program is in the justice center but outside of the secure area of the jail. The program is supervised by the Programs Manager. The program is available for offenders that are sentenced directly by the court, furloughed inmates, and those sanctioned by Community Corrections. Incarcerated inmates generally need to take advantage of available programming in the jail and complete 80% of their sentence before they are considered for furlough to work release. They are allowed a period of job search status. Direct sentenced and sanctioned offenders are expected to be employed at the time of placement in the program.

Offenders on job search status are required to provide an itinerary that is verified by program staff. Employed offenders job status is verified and attendance is confirmed. Offenders in the work release program are required to pay a daily fee based on a sliding scale determined by their income

Check all that apply:

Probationers high medium low limited risk

Parolees high medium low limited risk

Local Control Offenders

Other Offender Type(s): misdemeanors

Men Women Both

Residential Non-residential Both

Total Number of Offenders to Served During the Biennium: 800

Number of Offenders Who Can be Actively Involved at Any One Time: 36

Program Uses State Grant Funds: Yes

COUNTY: Columbia

PROGRAM NAME: Work Crew

CONTACT PERSON: Lt. Jim Gibson

TELEPHONE: 503-366-4644

FAX: 503-366-4644

E-Mail: gibsonj@co.columbia.or.us

PROGRAM ADDRESS: 901 Port Ave.
St. Helens, OR 97051

PROGRAM PURPOSE: To provide a non custody sentencing alternative for the releasing authorities. The program provides a cost-effective work force for maintaining the local parks and county roads. The program also provides the opportunity for offenders to make restitution by working on public projects.

PROGRAM DESCRIPTION: The work crew is managed by a Corrections Deputy. Offenders are sentenced by the court, furloughed from the jail, or sanctioned by Community Corrections to complete a varied number of custody units. The majority of the work is completed on Federal Lands, County Parks and roads.

The deputy completes the intake process, schedules, and supervises the daily work. The deputy also provides completion or noncompliance reports to the releasing authorities.

Check all that apply:

Probationers high medium low limited risk
 Parolees high medium low limited risk
 Local Control Offenders
 Other Offender Type(s): Misdemeanors

Men Women Both
 Residential Non-residential Both

Total Number of Offenders to Served During the Biennium: 2500

Number of Offenders Who Can be Actively Involved at Any One Time: 14

Program Uses State Grant Funds: Yes